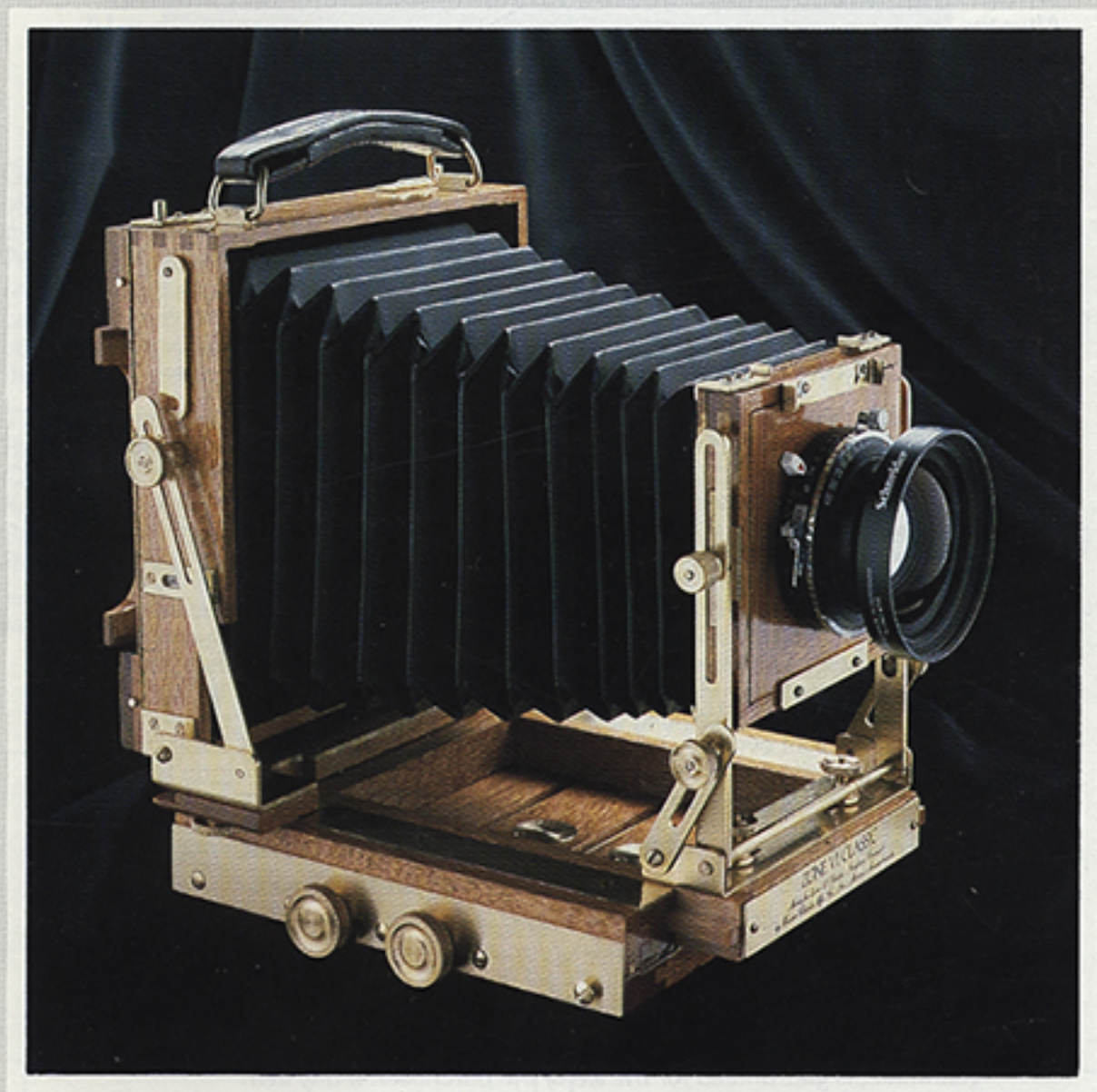


# ZONE VI STUDIOS INC



*The Zone VI Classic Camera*

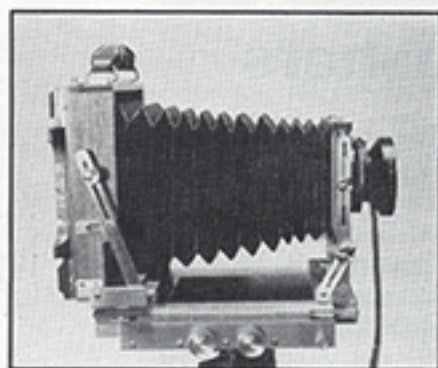
Photographic specialties  
1986-1987

**NEW**

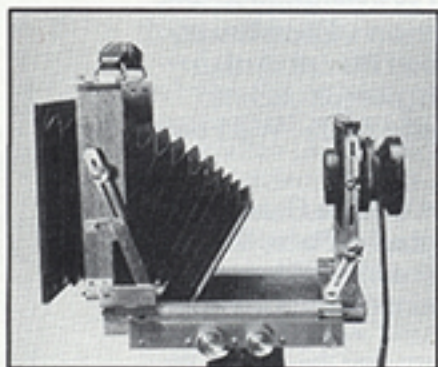
## The Zone VI Classic Camera

This camera was designed from scratch by Ron Wisner and Fred Picker. It is built in Marion, Massachusetts by Ron's Classic Manufacturing Company. The company is as well regarded for its construction of outstanding harpsichords and organs as it is for its custom cameras.

The Classic has many unique features: Its 16 inch bellows can handle, with full movements, lenses to 360 mm and allows a 1-1 ratio with a 210mm lens for close-ups. With a 120mm lens, you can get a 1-2 ratio. The bellows is instantly removable and a bag bellows (optional) can be substituted for the standard bellows for use with wide angle lenses. With the bag bellows, unlimited movements for lenses from 65mm to 120mm focal length can be utilized. No other field camera has interchangeable bellows. The Classic has a lateral shift movement which, we believe, is available on no other field camera. It has forward tilts from the base as well as through the lens axis; another unusual feature. All knobs and controls were designed so that the camera can be operated by a photographer wearing mittens.



The wood is Honduras mahogany of the finest quality obtainable. The camera is built in this country using only American parts. It is the only camera in which all fittings and fastenings, except for the stainless steel springs that hold the back against the film holder, are of polished brass. Even the focusing rails and gears are brass and all of the screws are brass.

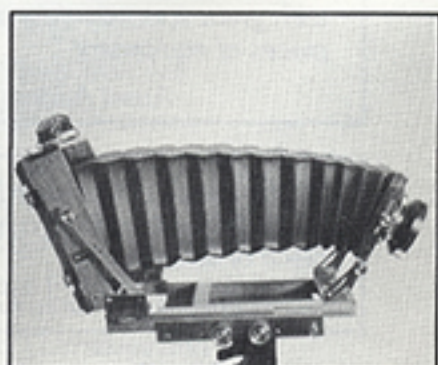
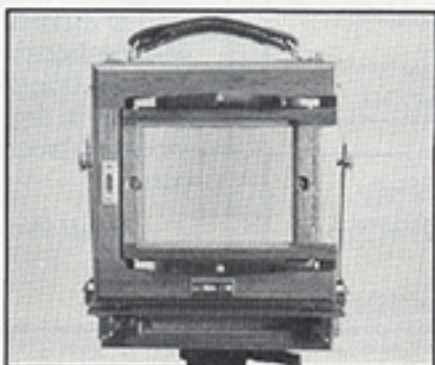
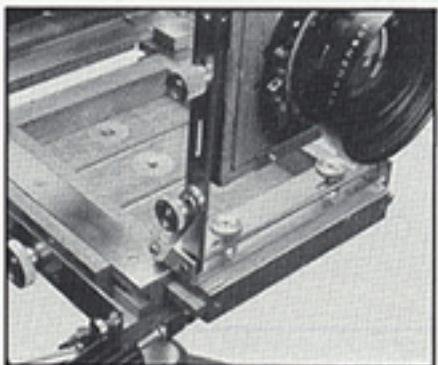


Comparisons with the Deardorff are inevitable: The Deardorff 4x5 is actually a 5x7 with a reducing back. The Classic, from the beginning, was designed as a 4x5. The Deardorff folded measures 4 inches by 9 3/4 inches by 9 inches (351 cubic inches). The Classic folded measures 3 3/4 inches by 8 7/8 inches by 7 1/4 inches (257 cubic inches). The Deardorff weighs seven pounds; the Classic weighs five. The Deardorff was quoted by a New York discount store in September, 1986, at \$1,650.00, the Classic costs \$850.00.



The Classic is built to the same standards of precision, strength and quality of finish as Wisner's musical instruments. All parts are in stock at the plant at all times and repairs will be made promptly and at no cost. With each camera there is a certificate signed by Fred Picker and Ron Wisner guaranteeing repair or replacement if the camera should ever fail to perform as well as it did the day it was received. Our guarantee includes broken ground glass, worn out bellows, or anything else. The Classic also carries the regular Zone VI thirty day trial and refund privilege. No other supplier offers either of these guarantees because no other supplier makes a camera like this.

The Classic is the finest camera of its kind that we have ever seen and it is the most beautifully made product that Zone VI has ever offered. If you cherish excellence of design and exquisite craftsmanship as we do (and appreciate its rarity) you will delight in the ownership of a Classic.





Lots of photographs and an eight page detailed description of the philosophy, design, and construction of the Classic is available. Call or write for a free copy of *How to Build a Camera* by Fred Picker.

*HP* **Built by Zone VI—Guaranteed for life.**  
**You will never have to buy another camera.**

R601 (Zone VI Classic Camera) .....	\$850.
R610 (Bag Bellows—optional) .....	85.
R611 (Classic lensboard; holes cut 35mm, 40mm, or not cut—specify) .....	21.
R684 (Classic camera case) .....	83.
R312 (Fresnel lens—optional) .....	55.
R686 ( <i>How to Build a Camera</i> by Fred Picker) .....	FREE

**FOR RUSH DELIVERY, CALL (802) 257-5161**

