

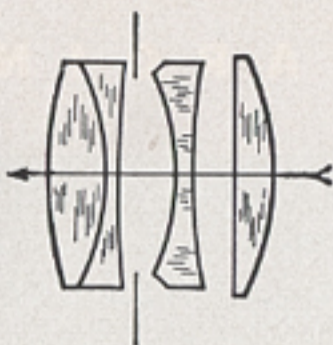
Wollensak

R A P T A R E N L A R G I N G L E N S E S



Wollensak

RAPTAR ENLARGING LENSES



Crisp, brilliant enlargements . . . prints that capture all the warmth and fine detail of your negatives . . . are easy to achieve with the new Wollensak Raptar Enlarging Lenses.

NEW IMPROVEMENTS . . . to help you get sharper, more brilliant prints

These RAPTAR enlarging lenses are the finest in the history of Wollensak precision manufacture. Special attention has been given in design to greatly increase resolving power . . . a major factor in the finer definition of your prints. Also, every Enlarging Raptar is specially treated with Wollensak anti-reflecting hard coating, WOCOTE (indicated by the symbol $\text{\textcircled{W}}$ on every Raptar lens). WOCOTE helps to cut down internal reflections; it increases light transmission, an important factor in decreasing exposure time. Thus it produces prints of greater contrast and brilliance, sharper definition, than have been possible up to now.

USED by leading salonists, professional and commercial photographers

For many years, Wollensak enlarging lenses have been chosen by well-known salon exhibitors . . . approved by critical professional and commercial photographers. Too, many important American manufacturers of enlarging equipment use Wollensak lenses exclusively on their enlargers.

This internationally-recognized ability to consistently produce prints of outstanding photographic excellence . . . *plus* today's new improvements in Wollensak lens design and performance . . . make your new Wollensak Enlarging Raptar a major addition to your fine photographic equipment.

In an enlarging lens, *flatness of field* is of special importance, since a flat subject, your negative, is projected onto the flat surface of the paper at short working distance. Your Wollensak Enlarging Raptar possesses this essential characteristic to a high degree—no need to fear fuzzy, out-of-focus corners.

The Enlarging Raptar distributes light evenly over the entire print surface—corners are as fully lighted as is the center portion of the enlargement. Its high resolving power produces the fine definition demanded by the experienced photographer.

NOTE:

"Resolving power" is the ability of a lens to separate the images of closely spaced parallel lines. It is measured by photographing a precise target, with line patterns of varying size; the width of the individual lines is equal to the width of the individual spaces between them.

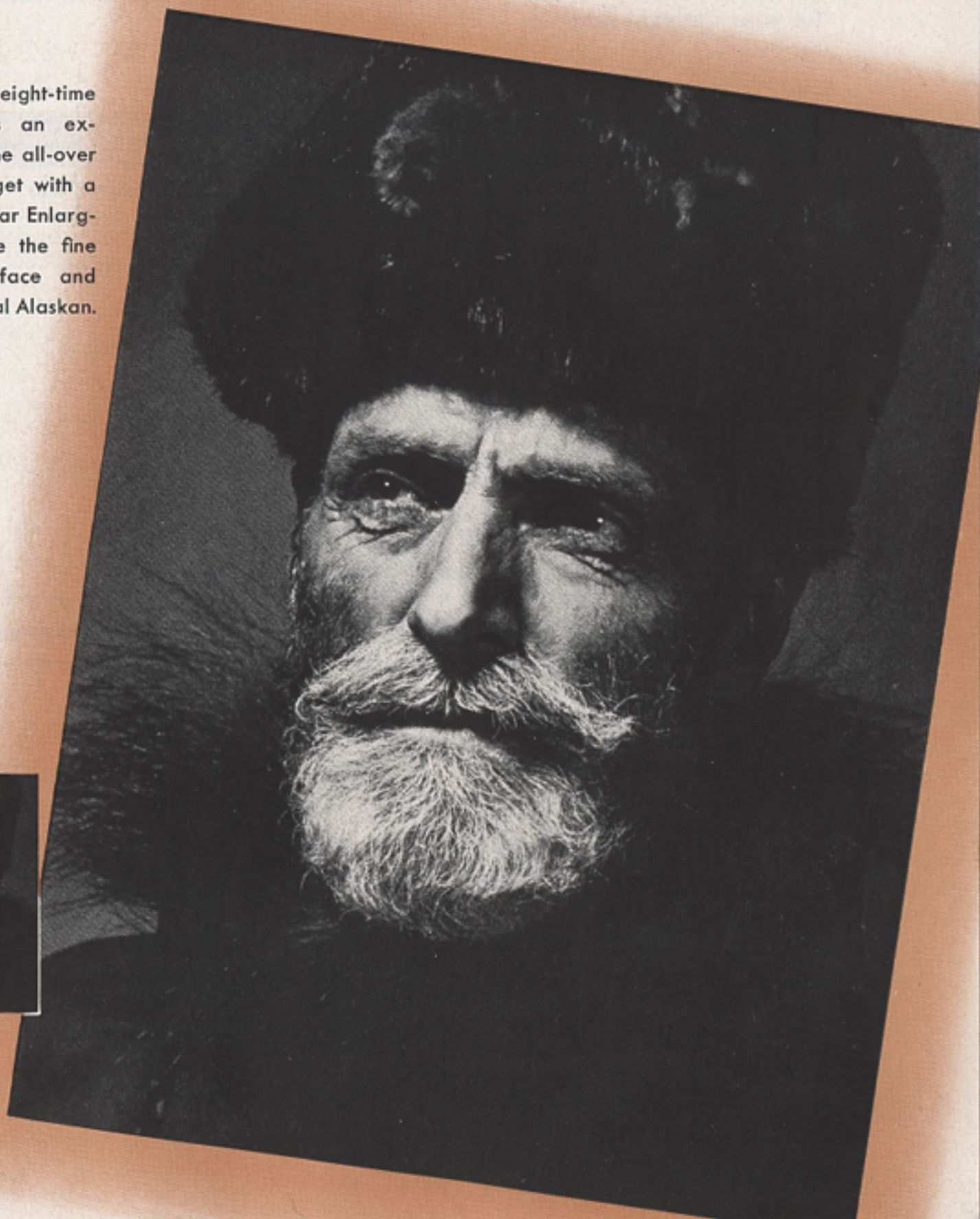
... **Series f/4.5**

... **for sparkling,
salon-quality prints**

Because the Enlarging Raptar is effectively corrected for lateral chromatic aberration,* it is well adapted for color work—whether for making separation negatives, enlarging separation negatives or making direct color enlargements. Here, too, WOCOTE anti-reflecting coating is of value in reproducing fine detail and tonal values.

*Lateral chromatic aberration, or chromatic differences of magnification is an aberration which produces differences in magnification of various color images. When, for example, an enlarging lens is used to make 3-color separation negatives from color film, this aberration, if not corrected, results in color fringes which cannot be reduced by stepping down the lens.

• Here, in an eight-time enlargement, is an example of the fine all-over sharpness you get with a Wollensak Raptar Enlarging Lens. Notice the fine detail in the face and beard of this real Alaskan.



WHAT *Wollensak* QUALITY MEANS TO YOU

Because every Wollensak Enlarging Raptar is designed, engineered and built for outstanding, long-lived lens performance, you can be sure *your* new lens will give you years of efficient service.

You'll find Wollensak Enlarging Raptars are carefully corrected for spherical and chromatic aberration, coma, distortion and astigmatism. This means your lens will be free from the optical imperfections which produce distorted, inferior prints. Wollensak Enlarging Raptars are mounted with extreme precision; each element is individually tested on a special lathe to assure true concentricity. This means your prints will be sharp at the edges and the center when viewed at normal distance.

Even when you enlarge miniature negatives to full 8 x 10 and larger, you'll find your prints have the all-over brilliance that can be obtained *only* with a fine lens.

Your dealer will be glad to recommend the correct Wollensak Enlarging Raptar for your individual needs.

SPECIFICATIONS

Catalog Number	Size Inch	Equiv. Focus	
		Inch	mm
000	1 $\frac{1}{4}$ x 1 $\frac{5}{8}$	2	50
00	2 $\frac{1}{4}$ x 2 $\frac{1}{4}$	3	75
0	2 $\frac{1}{4}$ x 3 $\frac{1}{4}$	3 $\frac{1}{2}$	90
0-1	2 $\frac{1}{4}$ x 3 $\frac{1}{4}$	4	101
1	3 $\frac{1}{4}$ x 4 $\frac{1}{4}$	5	127
1-2	4 x 5	5 $\frac{5}{16}$	135
2	4 x 5	6 $\frac{3}{8}$	162
3	5 x 7	7 $\frac{1}{2}$	190
3a	5 x 8	8 $\frac{1}{4}$	210
4	6 $\frac{1}{2}$ x 8 $\frac{1}{2}$	9 $\frac{1}{2}$	241

SPECIAL ADAPTER for fitting above 2", 3", and 3 $\frac{1}{2}$ " Focus Lenses to Leica Enlargers

Wollensak
MEANS FINE LENSES

OPTICAL CO. • ROCHESTER 5, N. Y.