

ILEX

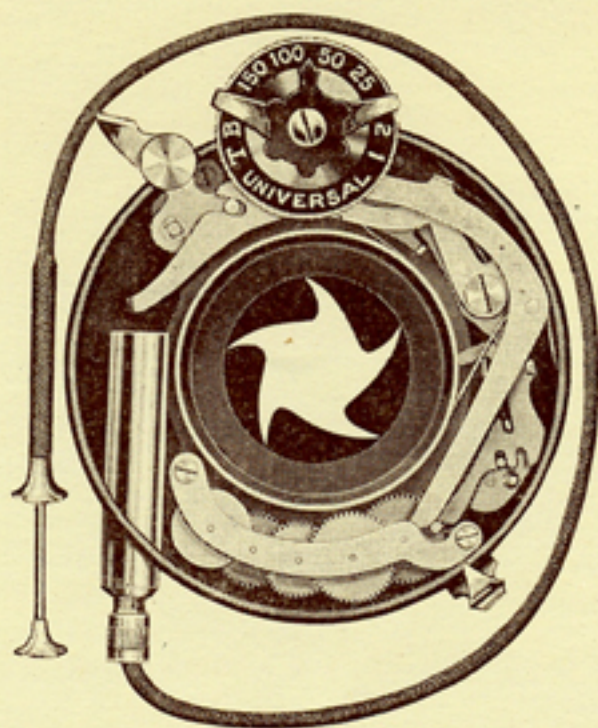


Photographic Shutters
AND LENSES

Catalogue *and* Prices

O F

ILEX SHUTTERS AND LENSES



The *ILEX* shutter is the only shutter on the market
which is neither operated nor controlled by air cylinders

ILEX OPTICAL COMPANY
ROCHESTER, N. Y., U. S. A.

Preface

No doubt you have noticed there has been an increasing demand for ILEX shutters and lenses in the past few years, also that they are distributed to all parts of the world and have given entire satisfaction.

ILEX are the only shutters on the market that are neither operated nor controlled by air cylinders or valves, thus eliminating considerable shutter troubles.

ILEX shutters are beyond the experimental stage and we have spared neither time nor expense in bringing them to the highest point of efficiency, and furnish the user with a sense of satisfaction.

Our shutters are substantial, accurately made and set up by experts.

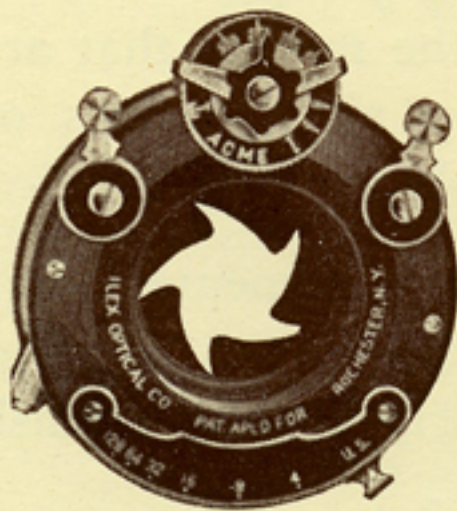
In addition to the shutters, we list in our catalogue the ILEX ANASTIGMAT lens working at F. 6. 3. Also Wide Angle, Rapid Convertible lenses, etc. These are of interest to many, for when used together with our shutters they make the enthusiast enjoy photography to the utmost.

Our desire and aim is to furnish you with the best.

Use an Ilex and avoid shutter trouble

ILEX OPTICAL COMPANY

Ilex Acme



This shutter, while built to meet the demand for an extraordinary fast speed, has every advantage of the slower speeds.

A positive and accurate difference between the higher speeds is secured by the ILEX "auxiliary speed adjuster" and by its co-operation with the ILEX "wheel-arrangement"—both of which are embodied in its construction—an absolute variation is secured on *all* speeds and under *all* conditions.

The entire mechanism is controlled automatically by one dial operating in either direction, instead of two separate indicators that interlock against one another. The different speeds indicated on the dial are exactly what you get. It is impossible for them to vary under any conditions.

It possesses the advantage of a large light aperture with a comparatively small shutter body.

Has a speed of 1/300th second and is capable of photographing most of the fastest moving objects without the slightest blur in the picture. In addition to "Time and Bulb" it furnishes all the intermediate speeds down to one second, and is absolutely dependable and unvarying.

Five-blade, star-shaped light opening, thus giving the greatest and most even illumination.

Ilex Acme *Continued from Opposite page*

The shutter is set by the right-hand lever which remains in its "set" position until released, making it easy to discern whether or not the shutter is set.

It may be released either by finger-lever or wire release and responds without the slightest jar or recoil.

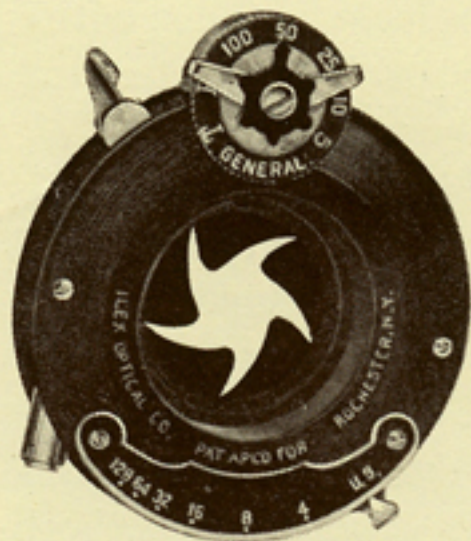
The combined advantages embodied in the Ilex Acme make it the most perfect and complete "fast-speed" shutter ever produced.

It has iris diaphragm and is made in the following sizes:

| Number | Light Aperture | Lens Opening | Outside Diameter | Price |
|--------|--------------------|--------------------|-------------------|---------|
| 0 | $\frac{3}{4}$ in. | 1.1-16 in. | 2.1-16 in. | \$14.00 |
| 1 | 1 " | 1.3-16 " | 2 $\frac{1}{4}$ " | 15.00 |
| 2 | 1.3-32 " | 1.7-16 " | 2 $\frac{5}{8}$ " | 16.00 |
| 3 | 1. $\frac{3}{8}$ " | 1. $\frac{3}{4}$ " | 3 " | 18.00 |
| 4 | 1. $\frac{3}{4}$ " | 2.5-16 " | 3 $\frac{5}{8}$ " | 20.00 |



Ilex General



This shutter is a popular priced "general-use" shutter, strictly automatic in action and does not require setting. It may be operated either by finger-lever or wire release. The entire mechanism is controlled by one dial operating in either direction. It is similar to our Ilex Universal.

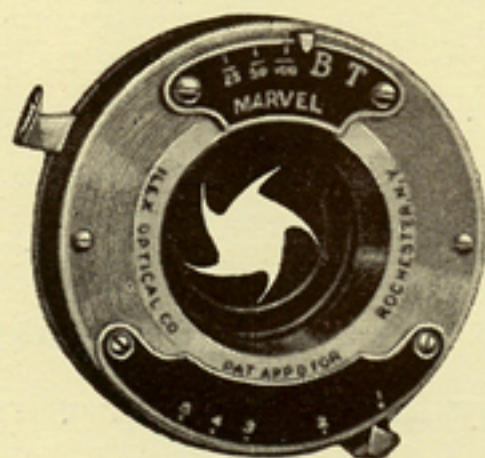
The Ilex "wheel-arrangement" embodied in its construction gives an accurate 100th, 50th, 25th, 10th, 5th, in addition to "Time and Bulb."

It covers every requirement for a general-use shutter, and is decidedly the greatest value ever offered at its cost.

In connection with the five blade star shaped light opening it has iris diaphragm and is made in the following sizes:

| Number | Light Aperture | Lens Opening | Outside Diameter | Price |
|--------|-------------------|--------------|------------------|--------|
| 0 | $\frac{3}{4}$ in. | 1.1-16 in. | 2.1-16 in. | \$5.00 |
| 1 | 1 " | 1.3-16 " | 2.1/4 " | 6.00 |
| 2 | 1.3-32 " | 1.7-16 " | 2.5/8 " | 7.00 |
| 3 | 1.3/8 " | 1.3/4 " | 3 " | 8.00 |
| 4 | 1.3/4 " | 2.5-16 " | 3.5/8 " | 9.00 |

Ilex Marvel



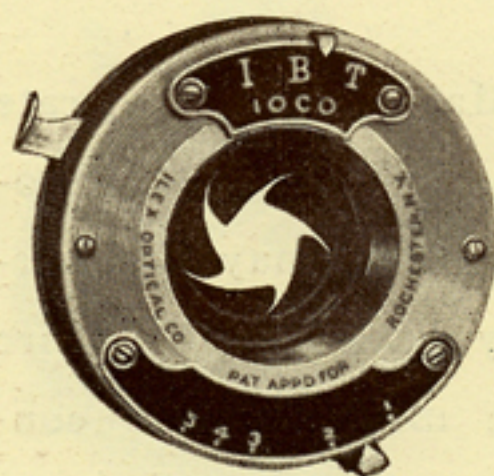
Our Ilex Marvel is a moderate priced shutter, is strictly automatic in action and may be operated either by finger-lever or wire release. The mechanism is controlled by a pointer lever.

In addition to 1/25, 1/50, 1/100 speeds it has "Time and Bulb," which makes it a practical and valuable shutter.

It has the five-blade, star-shaped light opening, also iris diaphragm and is made in two sizes. It can be adapted for use with all ordinary sizes of lenses, either single or double.

| Number | Light Aperture | Lens Opening | Outside Diameter | Price |
|--------|-----------------|-------------------|---------------------|---------|
| 00 | 9.16 in. | $\frac{7}{8}$ in. | 1 $\frac{5}{8}$ in. | \$ 3.00 |
| 0 | $\frac{3}{4}$ " | 1.1-16 " | 2.1-16 " | 4.00 |

Ilex Ioco



This shutter meets the demand for a low price T. B. I. shutter.

It is strictly automatic in action and furnishes either Time, Bulb, or Instantaneous exposures. It may be operated by finger-lever or wire release.

It has a five-blade, star-shaped light opening, also iris diaphragm and is made in two sizes.

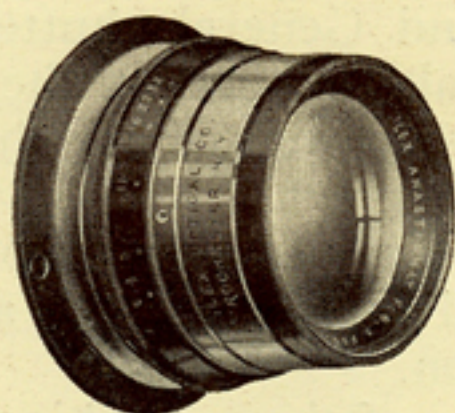
It can be adapted for use with all ordinary sizes of lenses, either single or double.

| Number | Light Aperture | Lens Opening | Outside Diameter | Price |
|--------|-----------------|-------------------|---------------------|---------|
| 00 | 9-16 in. | $\frac{7}{8}$ in. | 1 $\frac{5}{8}$ in. | \$ 2.00 |
| 0 | $\frac{3}{4}$ " | 1.1-16 " | 2.1-16 " | 3.00 |





Ilex Anastigmat F 6.3



The Ilex Anastigmat is a lens that fulfills every requirement for a high grade lens, and when mounted in barrel is very desirable for portraiture, groups, landscapes, copying enlarging and press work, also telephoto work, but when using singly it should be stopped down so as to cover sharply the entire plate or film.

For color correction and particularly for entire absence of spherical and zone aberrations the ILEX Anastigmat has never been equaled.

This lens is furnished in a highly finished aluminum barrel with Iris diaphragm and cap, also mounted in ILEX shutters as shown on the following pages as the ILEX Combinations.

To sum up, we claim the Ilex Anastigmat is equal, if not superior, to any other photographic lens on the market, quite regardless of price, and we back our claim with a guarantee to refund the purchase price of any of our lenses if returned and proven under like conditions to give an inferior negative to that of any other photographic lens of the same focal length and aperture.

| Diameter of Lens Inches | Equivalent Focus Inches | Plates covered sharply at | | Price in Barrel |
|-------------------------|-------------------------|---------------------------------------|-------------------------------------|-----------------|
| | | F.6.3. | Smaller Stop | |
| $\frac{3}{4}$ | 4 $\frac{1}{2}$ | 3 $\frac{1}{4}$ x 4 $\frac{1}{4}$ in. | 4 x 5 in. | \$ 17.00 |
| 1 | 6 | 4 x 5 " | 4 $\frac{1}{4}$ x 6 $\frac{1}{2}$ " | 18.50 |
| 1 $\frac{1}{8}$ | 6 $\frac{1}{2}$ | 3 $\frac{1}{4}$ x 5 $\frac{1}{2}$ " | 5 x 7 " | 18.50 |
| 1 $\frac{1}{4}$ | 7 $\frac{1}{2}$ | 5 x 7 " | 6 $\frac{1}{2}$ x 8 $\frac{1}{2}$ " | 33.50 |
| 1.7-16 | 8 $\frac{1}{2}$ | 5 x 8 " | 7 x 9 " | 41.25 |
| 1 $\frac{5}{8}$ | 10 | 6 $\frac{1}{2}$ x 8 $\frac{1}{2}$ " | 8 x 10 " | 62.00 |
| 2 | 12 | 8 x 10 " | 10 x 12 " | 68.00 |

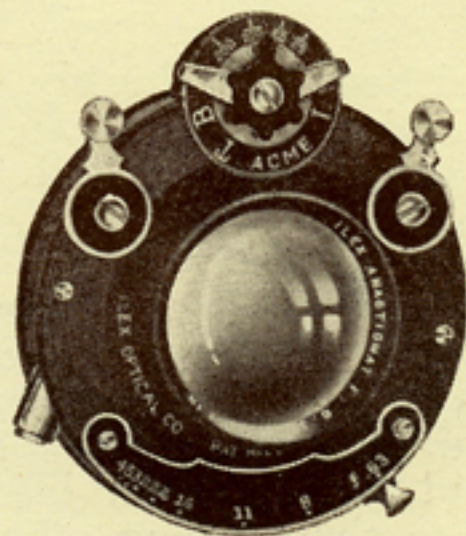
Ilex Combinations

A lens and shutter that will do the greatest number of things best is the ILEX Anastigmat F.6.3 lens in an ILEX Shutter, as shown on these pages.

We list the Acme, Universal and General shutter with this lens to show what an ideal combination they are for small and compact cameras as well as for the larger sizes.

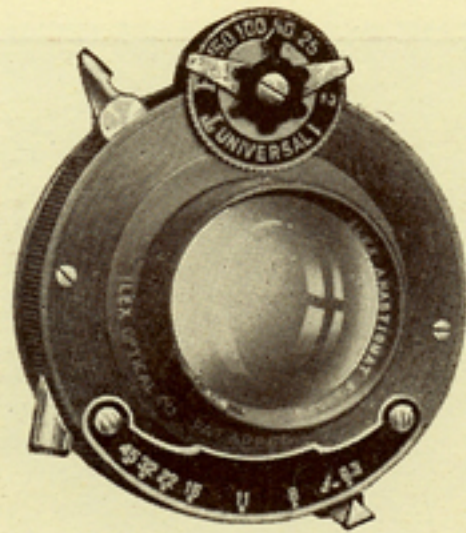
These lenses and shutters are the same as listed on the previous pages except mounted in our shutters at the prices opposite each combination.

No charge is made for fitting any of these combinations to cameras if sent to us prepaid.



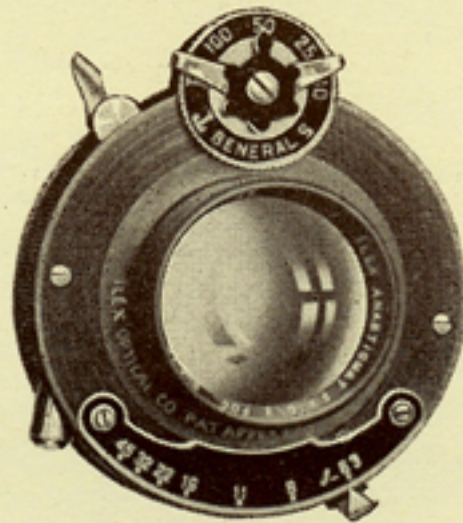
ACME

| Diameter of Lens Inches | Equivalent Focus Inches | Plates Covered Sharply at | | In Acme Shutter |
|-------------------------|-------------------------|---------------------------|-----------------|-----------------|
| | | F.6.3. | Smaller Stop | |
| 3/4 | 4 1/2 | 3 1/4 x 4 1/4 in. | 4 x 5 " | \$ 29.00 |
| 1 | 6 | 4 x 5 " | 4 1/4 x 6 1/2 " | 30.00 |
| 1 1/8 | 6 1/2 | 3 1/4 x 5 1/2 " | 5 x 7 " | 30.00 |
| 1 1/4 | 7 1/2 | 5 x 7 " | 6 1/2 x 8 1/2 " | 46.50 |
| 1.7-16 | 8 1/2 | 5 x 8 " | 7 x 9 " | 57.50 |
| 1 5/8 | 10 | 6 1/2 x 8 1/2 " | 8 x 10 " | 81.00 |
| 2 | 12 | 8 x 10 " | 10 x 12 " | 91.00 |



UNIVERSAL

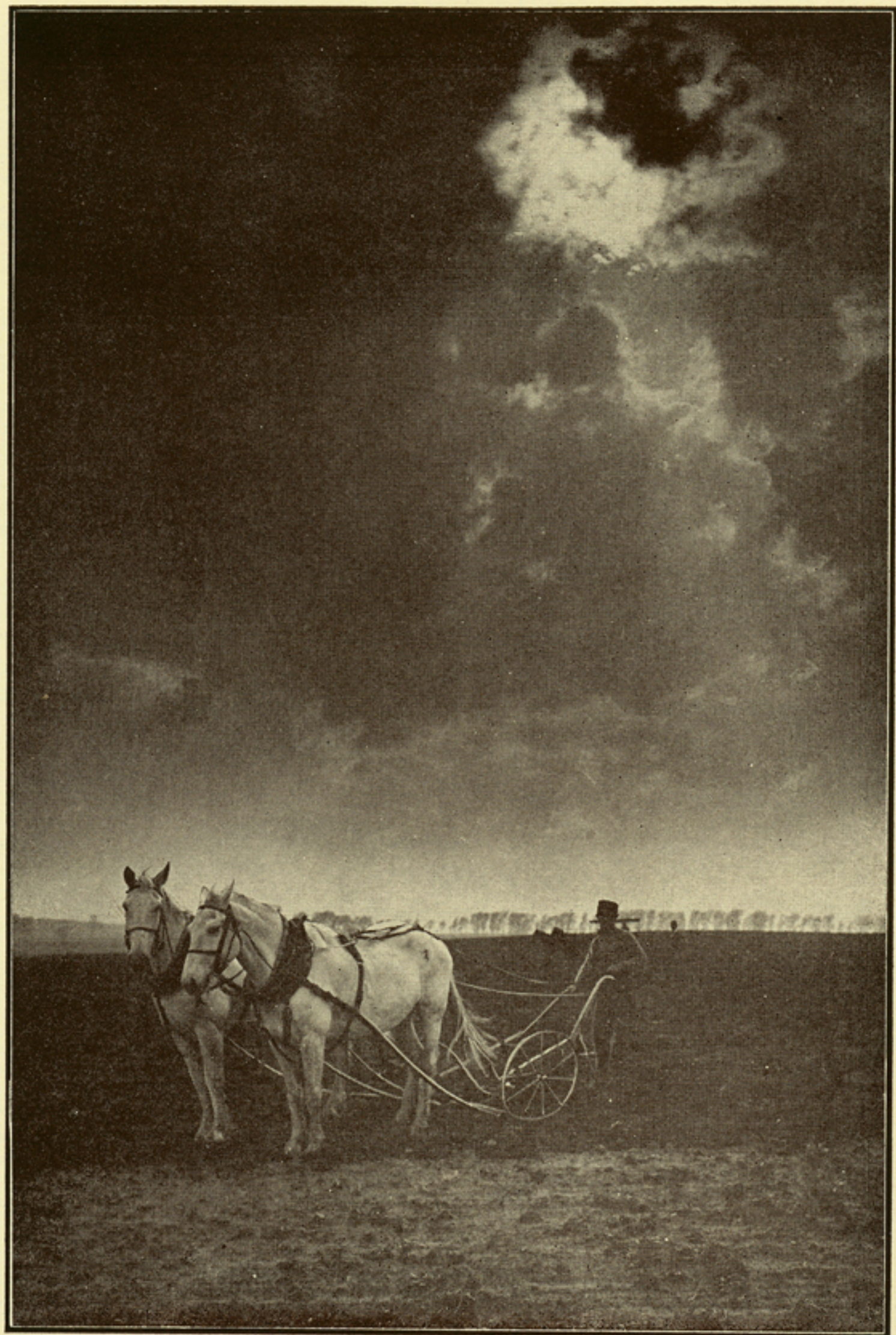
| Diameter of Lens Inches | Equivalent Focus Inches | Plates Covered Sharply at | | In Universal Shutter |
|-------------------------|-------------------------|---------------------------|-----------------|----------------------|
| | | F.6.3. | Smaller Stop | |
| 3/4 | 4 1/2 | 3 1/4 x 4 1/4 in. | 4 x 5 in. | \$24.00 |
| 1 | 6 | 4 x 5 " | 4 1/4 x 6 1/2 " | 25.00 |
| 1 1/8 | 6 1/2 | 3 1/4 x 5 1/2 " | 5 x 7 " | 25.00 |
| 1 1/4 | 7 1/2 | 5 x 7 " | 6 1/2 x 8 1/2 " | 40.50 |
| 1.7-16 | 8 1/2 | 5 x 8 " | 7 x 9 " | 49.75 |
| 1 5/8 | 10 | 6 1/2 x 8 1/2 " | 8 x 10 " | 73.00 |
| 2 | 12 | 8 x 10 " | 10 x 12 " | 81.00 |



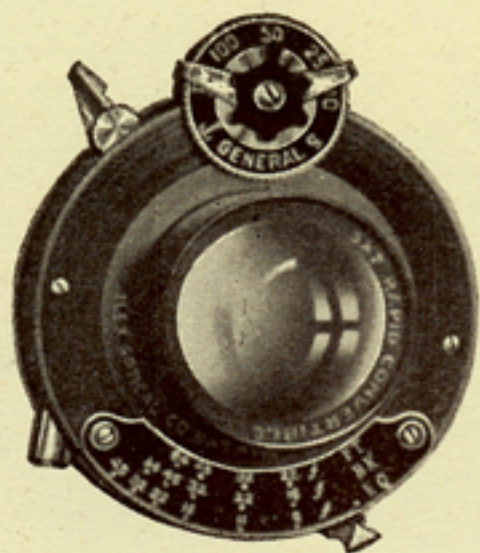
GENERAL

| Diameter of Lens Inches | Equivalent Focus Inches | Plates Covered Sharply at | | In General Shutter |
|-------------------------|-------------------------|---------------------------|-----------------|--------------------|
| | | F.6.3. | Smaller Stop | |
| 3/4 | 4 1/2 | 3 1/4 x 4 1/4 in. | 4 x 5 in. | \$19.00 |
| 1 | 6 | 4 x 5 " | 4 1/4 x 6 1/2 " | 20.00 |
| 1 1/8 | 6 1/2 | 3 1/4 x 5 1/2 " | 5 x 7 " | 20.00 |
| 1 1/4 | 7 1/2 | 5 x 7 " | 6 1/2 x 8 1/2 " | 35.00 |
| 1.7-16 | 8 1/2 | 5 x 8 " | 7 x 9 " | 45.00 |
| 1 5/8 | 10 | 6 1/2 x 8 1/2 " | 8 x 10 " | 69.00 |
| 2 | 12 | 8 x 10 " | 10 x 12 " | 77.00 |





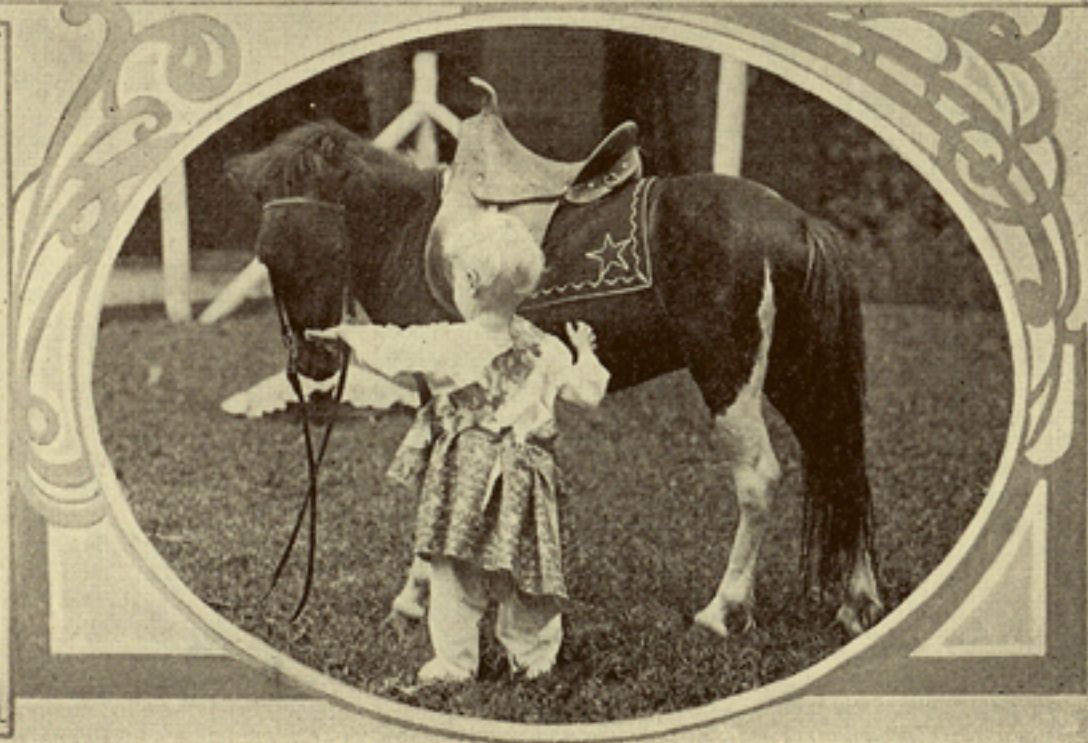
Rapid Convertible F.8



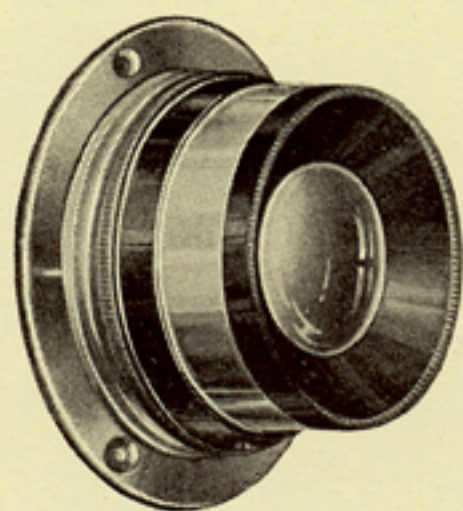
A Rapid Convertible of four lens construction cannot possibly result in a better compensation for spherical and chromatic aberrations. While not recommending this Lens as closely approaching Anastigmat Lenses in results, the optical work is the best and the surfaces are finished with the same care as our Anastigmats.

It has unusual brilliancy and covering power, front and back combinations can be used separately, practically giving the user three Lenses of different focal lengths from the one Lens. The Rapid Convertible is highly recommended as a remarkably fine Lens at a low price.

| No. | Size | Diam. Inches | Equiv. Focus Inches | Focus Back Lens Inches | Focus Front Lens Inches | With Marvel Shutter | With General Shutter | With Universal Shutter |
|-----|-----------------------------------|------------------|---------------------|------------------------|-------------------------|---------------------|----------------------|------------------------|
| 0 | 3 $\frac{1}{4}$ x 4 $\frac{1}{4}$ | $\frac{3}{4}$ | 5 | | | \$ 8 50 | \$10 00 | \$12 00 |
| 1 | 4 x 5 | 1 | 6 | 10 | 13 $\frac{1}{2}$ | 9 50 | 12 00 | 14 00 |
| 1A | 3 $\frac{1}{4}$ x 5 $\frac{1}{2}$ | 1 | 6 $\frac{1}{2}$ | 10 $\frac{1}{2}$ | 14 | 10 00 | 12 50 | 14 50 |
| 2 | 5 x 7 | 1 $\frac{3}{16}$ | 8 | 12 $\frac{1}{2}$ | 17 | 11 00 | 13 00 | 15 00 |
| 3 | 5 x 8 | 1 $\frac{1}{4}$ | 8 $\frac{1}{2}$ | 13 $\frac{1}{2}$ | 18 | 12 00 | 14 00 | 16 00 |
| 4 | 6 $\frac{1}{2}$ x 8 $\frac{1}{2}$ | 1 $\frac{1}{2}$ | 11 | 17 | 23 | 14 00 | 16 00 | 21 00 |
| 5 | 8 x 10 | 2 | 13 | 20 $\frac{1}{2}$ | 28 | 22 00 | 25 00 | 28 00 |



Wide Angle F. 16



We list herewith our Wide Angle F. 16 lens 70 to 80 degrees, also our wide angle lens from 90 to 100 degrees.

These lenses are designed to meet the demand of an all-round short focus lens and they give sharp definition and flat field over the entire plate.

These lenses are very desirable for interior work, copying, flashlight photography, etc.

They are furnished either in barrel with Iris diaphragm or in Ilex General shutter, at the following prices.

MEDIUM W. A. LENS—ANGLE OF VIEW 79° TO 80°

| No. | Plate Covered at F. 16 Inches | Equivalent Focus Inches | Diameter of Lenses Inches | Barrel with Iris Diaphragm | | In General Shutter |
|-----|-------------------------------|-------------------------|---------------------------|----------------------------|-----------|--------------------|
| | | | | In Cells | In Barrel | |
| 3 | 4 x 5 | 4 | 3/4 | \$ 5 00 | \$ 7 00 | \$ 9 00 |
| 5 | 5 x 7 | 5 1/2 | 7/8 | 6 00 | 9 00 | 11 00 |
| 7 | 6 1/2 x 8 1/2 | 6 1/2 | 1 | 8 00 | 11 00 | 13 00 |
| 8 | 8 x 10 | 8 | 1 1/8 | 10 00 | 13 00 | 16 00 |
| 9 | 10 x 12 | 9 1/2 | 1 1/2 | 12 50 | 15 00 | 19 00 |

EXTREME W. A. LENS—ANGLE OF VIEW 90° TO 100°

| No. | Plate Covered at F. 16 Inches | Equivalent Focus Inches | Diameter of Lenses Inches | Barrel with Iris Diaphragm | | In General Shutter |
|-----|-------------------------------|-------------------------|---------------------------|----------------------------|--------------|--------------------|
| | | | | In Cells | In Genl. Sh. | |
| 3 | 4 x 5 | 3 1/4 | 5/8 | \$ 7 00 | \$15 00 | \$12 00 |
| 5 | 5 x 7 | 4 1/2 | 3/4 | 8 00 | 17 00 | 14 00 |
| 7 | 6 1/2 x 8 1/2 | 5 5/8 | 7/8 | 11 00 | 19 00 | 18 00 |
| 8 | 8 x 10 | 6 1/2 | 1 | 13 00 | 21 00 | 21 00 |
| 9 | 10 x 12 | 8 | 1 1/8 | 15 00 | 23 00 | 24 00 |

SPECIAL LENSES AND SHUTTERS

Other than listed in this catalogue will receive our prompt attention.

MOUNTING AND FITTING LENSES

We fit all makes of lenses to our shutters, but in all cases must have the lenses in original barrel or old shutter. Prices for this work quoted below.

MOUNTING, FITTING, Etc.

| Diameter | 1 in. | 1 - ¼ in. | 1 - ½ in. | 1 - ¾ in. | 2 - ¼ in. |
|-----------------------|--------|-----------|-----------|-----------|-----------|
| Number | 0 | 1 | 2 | 3 | 4 |
| Mounting & Fitting | \$1.50 | \$1.75 | \$2.00 | \$2.50 | \$3.00 |
| Standard Flanges | .25 | .30 | .40 | .50 | .60 |
| Special Flanges | .50 | .75 | 1.00 | 1.25 | 1.50 |
| Lens Caps | .20 | .30 | .40 | .50 | .60 |
| Wire Releases | .50 | | | | |
| Dia & Focusing Scales | .50 | | | | |

TERMS

The prices quoted in this catalogue cancel all previous prices and are strictly net except to manufacturers and dealers in photographic supplies.

We prefer at all times to sell our goods through a dealer but if there is no dealer in your locality we will send any outfit, lens or shutter on a ten-day trial upon receipt of full payment with order. If goods are found unsatisfactory at the end of that time and are returned in good order we will refund purchase price. All transportation charges to be paid by consumer.

GUARANTEE

We guarantee our shutters to be mechanically perfect and accurate and every lens to be optically correct as represented.

The growing popularity of Ilex goods is evidence of the just claims and the confidence in their merits.

