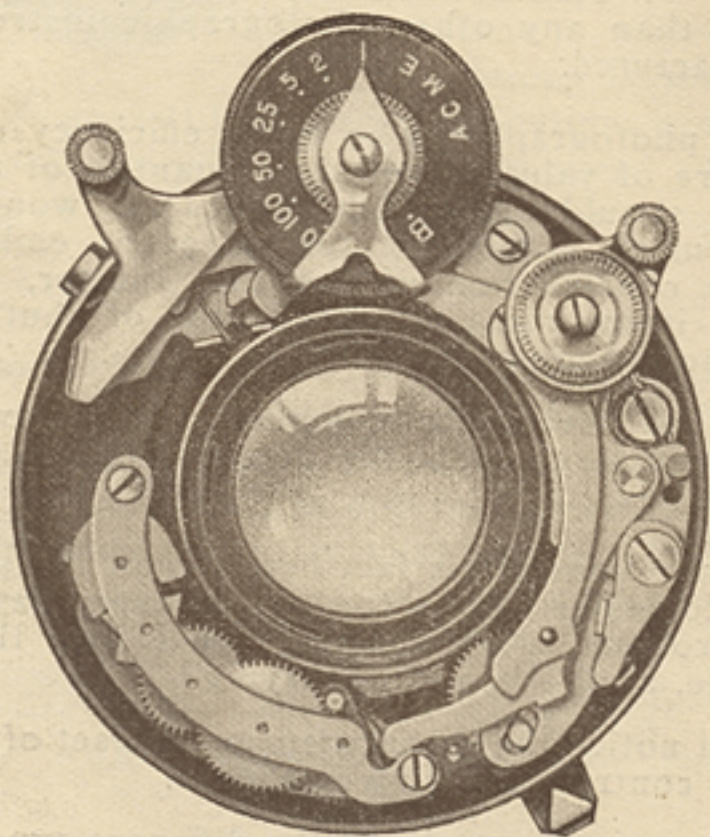


ILEX
ACME LENSES
AND
ILEX SHUTTERS



Use an Ilex and Avoid Shutter trouble

Manufactured and guaranteed by

ILEX OPTICAL COMPANY

Rochester, N. Y., U. S. A.

IT is the policy of the ILEX OPTICAL COMPANY to construct a shutter that will perform a service for the one who uses it as well as for the dealer who sells it.

The fundamental design of the ILEX shutter is so far in advance of any other shutter manufactured that it meets with instant success.

It is the only shutter manufactured in America that uses gears for retarding and controlling the speeds, this with compactness and simplicity of construction makes it nearer to a watch than any other photographic instrument manufactured.

The photographer who takes efficiency as his measure of value rather than quantity of mechanism should know all about the wonderful escapement controlled set of gears embodied in the construction of the Ilex shutter, which makes it the most advanced type of shutter in the photographic world.

It is the Mechanical complexity of the average shutter that compels the owner to trade it out for an Ilex.

No one knows this fact better than the photographic dealer who is confronted every day with the problem what shutter can I buy that is reliable, accurate, and unvarying?

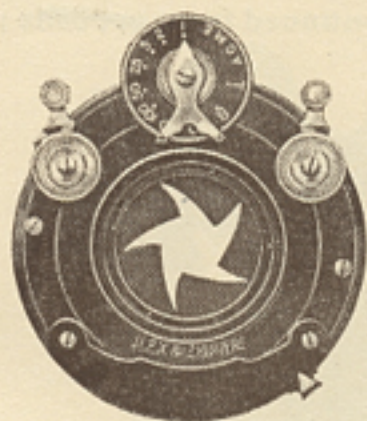
First notice the escapement on the set of gears which controls the slower speeds.

This escapement allows the different exposures to be timed correctly with positive variations of speeds.

Second is the Auxiliary speed adjuster which controls the higher speeds, also gives the exact variations. This works independent of the first mentioned set of gears on the high grade Ilex shutters, therefore exact speeds and variations is absolutely assured on every indicated speed, under any climatic condition or in any position of the camera.

Notice construction of shutter on front cover.

Ilex Acme



This shutter, while built to meet the demand for an extraordinary fast speed, has every advantage of the slower speeds.

Positive and accurate speeds and exact variations under all conditions is secured

by the Famous ILEX Gear combination, working in co-operation with the Auxiliary speed adjuster, both of which are embodied in its construction.

The entire mechanism is controlled automatically by one dial operating in either direction, instead of two separate indicators that interlock against one another. The different speeds indicated on the dial are exactly what you get. It is impossible for them to vary under any conditions.

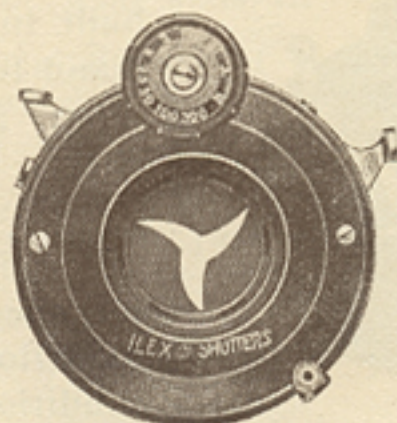
It possesses the advantage of a large light aperture with a comparatively small shutter body.

Has a speed of $1/300$ th second and is capable of photographing most of the fastest moving objects without the slightest blur in the picture. In addition to "Time and Bulb" it furnishes all the intermediate speeds down to one second, and is absolutely dependable and unvarying.

Star-shaped light opening, thus giving the greatest and most even illumination.

Ilex Acme

Continued from opposite page 3



The No. 00 Size

The shutter is set by the right-hand lever which remains in its "set" position until released, making it easy to discern whether or not the shutter is set.

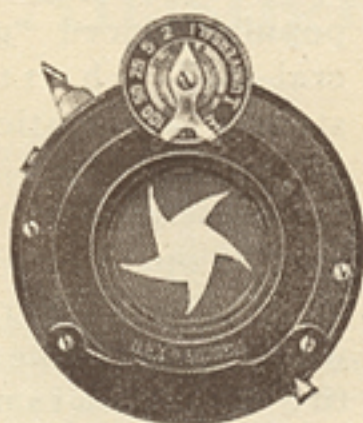
It may be released either by finger lever or wire release, and responds without the slightest jar or recoil.

The combined advantages embodied in the Ilex Acme make it the most perfect and complete "fast-speed" shutter ever produced.

It has iris diaphragm and is made in the following sizes:

Number	Light Aperture	Lens Opening	Outside Diameter	Price
00	11-16 in.	$\frac{7}{8}$ in.	1 $\frac{7}{8}$ in.	\$18.00
0	$\frac{3}{4}$ "	1.1-16 "	2.1-16 "	18.00
1	1 "	1.3-16 "	2 $\frac{1}{4}$ "	18.50
2	1.3-32 "	1.7-16 "	2 $\frac{5}{8}$ "	20.00
3	1 $\frac{3}{8}$ "	1 $\frac{3}{4}$ "	3 "	22.50
4	1 $\frac{3}{4}$ "	2.5-16 "	3 $\frac{5}{8}$ "	25.00

Ilex Universal



This shutter is strictly automatic in action and does not require setting. It may be operated either by finger-lever or wire release. The entire mechanism is controlled by one dial operating in either direction.

The high speed is fast enough for most purposes, and has all intermediate speeds down to one second in addition to "Time and Bulb".

It has the famous Ilex Gear combination embodied in its construction for controlling the speeds. Its general scope, both as regards fast speed and accuracy, adapts it to use either with medium or high-grade lenses. Excepting such cases as require extraordinary fast speed, we guarantee it to meet every requirement of the amateur as well as the more exacting demands of the most discriminating user of a camera.

The five-blade, star-shaped light opening, giving the greatest and most even illumination.

The latitude secured in an **Automatic** Shutter by the Ilex Universal, makes it positively essential and wholly indispensable to every camera.

Fitted with iris diaphragm and is made in the following sizes:

Number	Light Aperture	Lens Opening	Outside Diameter	Price
0	$\frac{1}{4}$ in.	1.1-16 in.	2.1-16 in.	\$14.50
1	1 "	1.3-16 "	2 $\frac{1}{4}$ "	15.00
2	1.3-32 "	1.7-16 "	2 $\frac{3}{8}$ "	16.00
3	1 $\frac{3}{8}$ "	1 $\frac{3}{4}$ "	3 "	18.00
4	1 $\frac{3}{4}$ "	2.5-16 "	3 $\frac{5}{8}$ "	20.00

Ilex General



This shutter is a popular priced "general-use" shutter, strictly automatic in action and does not require setting. It may be operated either by finger-lever or wire release. The entire mechanism is controlled by one dial operating in either direction. It is similar to our Ilex Universal.

This shutter also has the Ilex Gear Combination embodied in its construction which gives an accurate 100th, 50th, 25th, 10th, 5th, in addition to "Time and Bulb."

It covers every requirement for a general-use shutter, and is decidedly the greatest value ever offered at its cost.

In connection with the five blade star shaped light opening it has iris diaphragm and is made in the following sizes:

Number	Light Aperture	Lens Opening	Outside Dimensions	Price
*00	19-32 in.	13-16 in.	1.9-16 in.	\$10.00
0	$\frac{3}{4}$ "	1.1-16 "	2.1-16 "	10.00
1	1 "	1.3-16 "	2. $\frac{1}{4}$ "	12.00
2	1.3-32 "	1.7-16 "	2. $\frac{5}{8}$ "	13.00
3	1. $\frac{3}{8}$ "	1. $\frac{3}{4}$ "	3 "	15.00
4	1. $\frac{3}{4}$ "	2.5-16 "	3. $\frac{5}{8}$ "	18.00

*The speeds on the 00 General, range from 1-10 to 1-200 sec.

Acme Anastigmat Lens

In order to meet the great demand for a moderate priced Anastigmat Lens working at F.6.3 and F.7.5, we have spared neither time nor expense in order to produce a lens that would fill this long felt demand. We have already submitted lenses of this type to many camera manufacturers, who after testing them out thoroughly, report them O. K. and far superior to many that have been in the market for several years.

Up to the present time we have only attempted the manufacture of the 1 $\frac{1}{2}$ " and 2 $\frac{1}{2}$ " up to and including the 5x7" sizes in either the F.6.3 or F.7.5. Either speed will cover sharply at full aperture, the size plate for which listed, or one size larger by stopping down.

This type is fully corrected for spherical and chromatic aberration and astigmatism, and is free from coma, flare and distortion, which qualities render black, wiry definition over entire plate.

When mounted in Acme shutter or any of our manufacture, it makes an ideal outfit for Ansco, Rexo, Seneca, Kodak and all other makes of film or plate cameras.

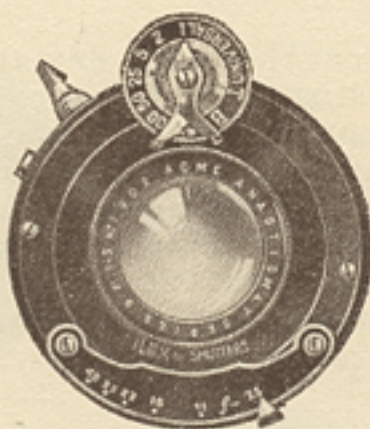
The F.6.3 is called Series "C" while the F. 7. 5 is called Series "D" and either of the two does excellent landscape, commercial and architectural work, speed photography of the ordinary kind, copying and enlarging and home portraiture, where light conditions are favorable.

The larger size lenses are under way and will be ready shortly. We will have lenses ranging from 6 $\frac{1}{2}$ x8 $\frac{1}{2}$ to 11x14.

Watch for announcement in Photographic Magazine.

Acme Anastigmat

Series D F. 7.5



This lens is especially adapted for use by the amateur, producing anastigmatic sharpness in the picture, and is perfectly corrected for spherical and chromatic aberration.

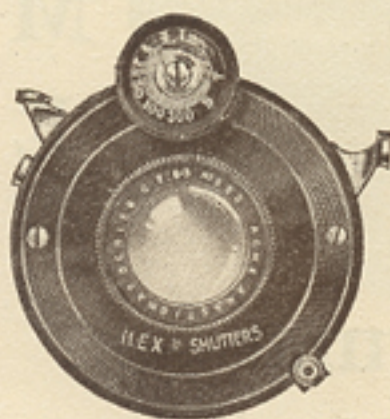
This lens can be fitted to all makes of hand cameras and advise that the camera be sent to us for accurate adjustment.

SERIES D F.7.5

Lens No.	Size of Plate at F.7.5	Equivalent Foc.	Cells	Bbl.	Acme	Universal	General	Shutter No.
00	1½ x 2½ in.	3½ in.	7.00	8:00	24.00		16.00	00
00	2¼ x 3¼ "	3½ "	7.00	8.00	24.00		16.00	00
0	2½ x 4¼ "	5 "	8.00	9.00	25.00	21.50	17.00	0
0	3¼ x 4¼ "	5¼ "	8.00	9.00	25.00	21.50	17.00	0
1	2¾ x 4¾ "	5¾ "	8.00	9.00	25.00	21.50	17.00	0
1	4 x 5 "	6 "	8.50	9.50	26.00	22.50	19.50	1
2	3¼ x 5½ "	6½ "	9.00	11.00	26.50	23.00	20.00	1
3	5 x 7 "	7¼ "	15.00	16.50	32.50	29.00	26.00	1

Acme Anastigmat

Series C F. 6.3

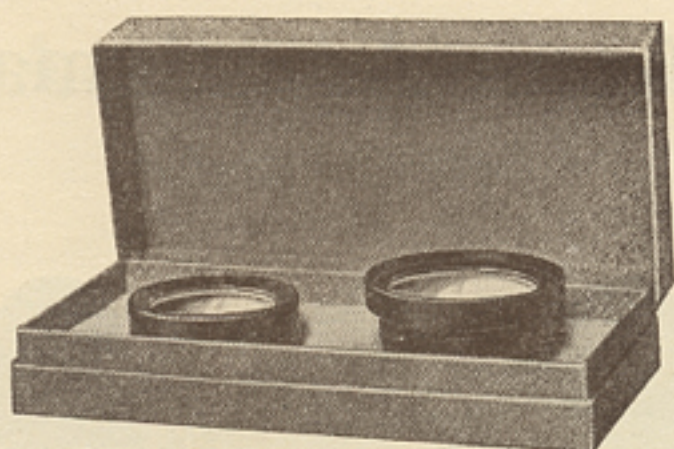


This lens is fully corrected for spherical and chromatic aberration and astigmatism and will make an ideal outfit when fitted to any of the Ilex shutters for hand camera use.

SERIES C F.6.3—SHUTTERS

Lens No.	Size of Plate at F-6.3	Equivalent Foc.	Cells	Bbl.	Acme	Universal	General	Shut-ter No.
00	1½ x 2½	3½ in.	14.00	15.00	31.00		23.00	00
00	2¼ x 3¼	3½ "	14.00	15.00	31.00		23.00	00
0	2½ x 4¼	5 "	16.00	17.00	33.00	29.50	25.00	0
0	3¼ x 4¼	5 "	16.00	17.00	33.00	29.50	25.00	0
1	2¾ x 4¾	5¾ "	16.50	17.50	34.00	30.50	25.50	1
1	4 x 5	6 "	16.50	17.50	34.00	30.50	25.50	1
2	3¼ x 5½	6½ "	17.50	19.00	35.00	31.50	28.50	2
3	5 x 7	7¾ "	22.50	30.00	40.00	36.50	33.50	3

I
L
E
X



A
C
M
E

Anastigmat Lenses

Lenses are made from the finest grade of imported optical glass obtainable and are ground, polished centered and mounted by men whose vast amount of knowledge has taught them the exact requirements of the amateur and professional photographer.

Symmetrical F.8



The F.8 is a rapid symmetrical convertible type. It is compact and suitable for hand camera work, where the finer and optical corrections and great speed are not essential.

Both elements are corrected for use separately. This lens can be used for copying, enlarging and general view work, as well as for portraiture and groups where lighting conditions are favorable.

Knowing that our various types of lenses have met the approval of many dealers and users we invite intelligent comparison between Ilex Lenses and others.

SYMMETRICAL F.8

Size	Focus	Dia. Lens	In Bbl.	Universal	General
3¼ x 4¼	5 in.	¾ in.	6.50	20.00	15.00
4 x 5	6½ "	1 "	8.00	22.00	19.00
5 x 7	8 "	1¼ "	9.00	23.00	20.00