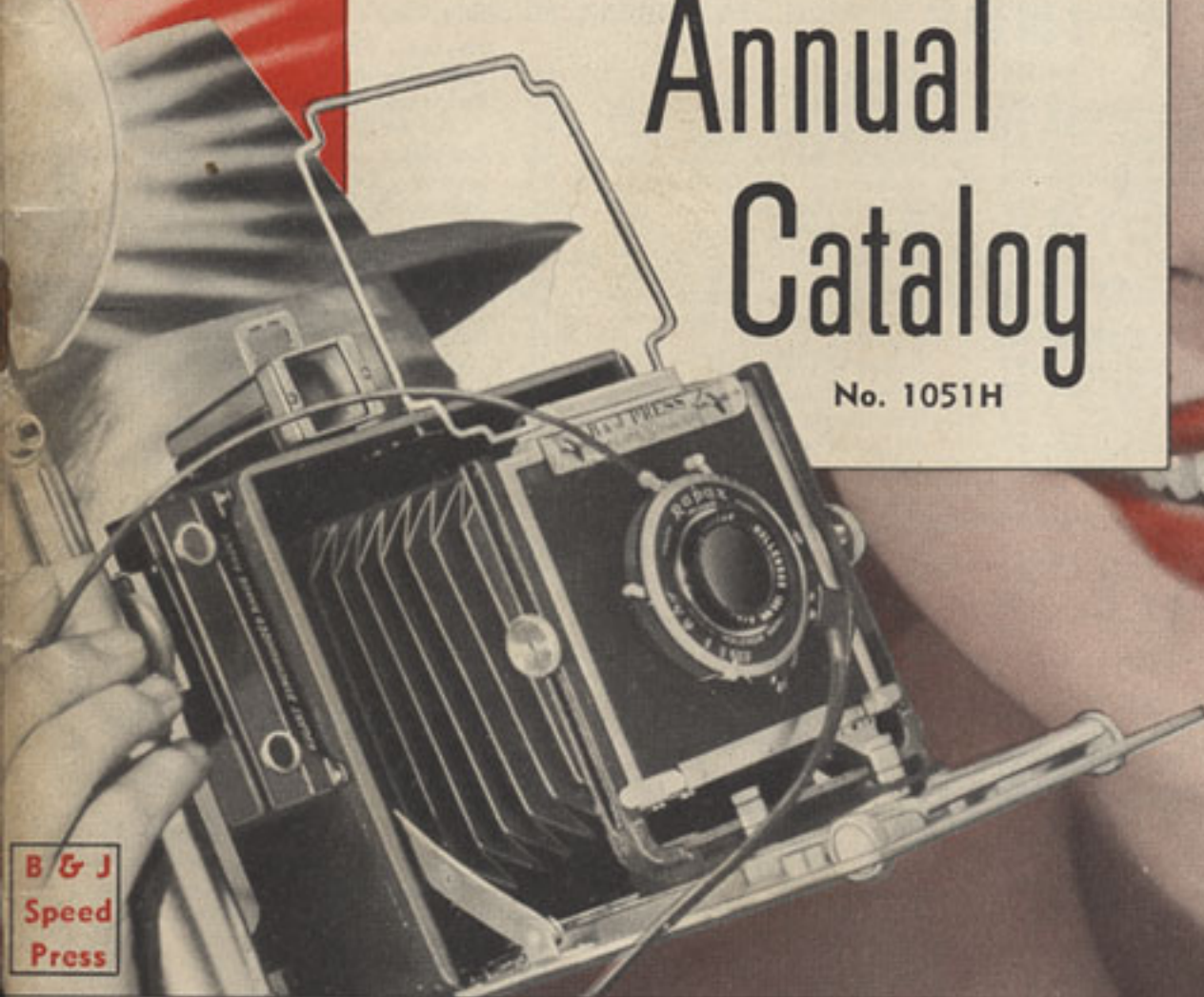


Burke & James 54th Annual Catalog

No. 1051H



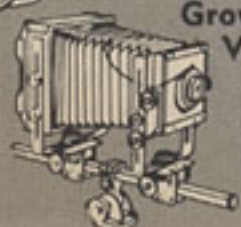
B & J
Speed
Press



Ciro-flex
Cameras



Ciro "35"
Cameras



Grover Universal
View Cameras



B & J View and
Rembrandt Portrait
Cameras

1897

Burke & James, Inc.

1951

FINE PHOTOGRAPHIC EQUIPMENT FOR OVER 54 YEARS
321 S. Wabash Ave., Chicago 4, Ill. U.S.A.

Cable Address "INGENTO"

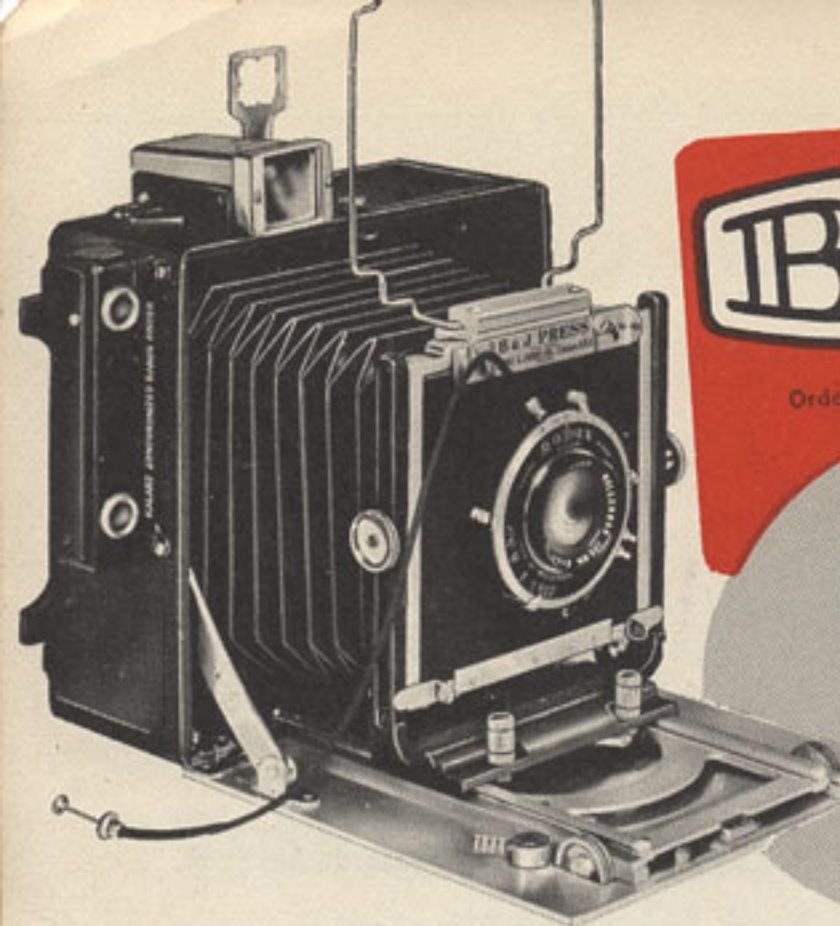
Rexo Dryers



The World's Largest
Varied Stock of Lenses



Solar Enlargers



B&J

Order by Number 401H

**4x5
INCH
\$84⁵⁰**

LESS LENS AND
ACCESSORIES

SPEED PRESS CAMERA

NOW!

USE IT FOR:

- PRESS WORK
- PICTORIALS
- PORTRAITS
- ARCHITECTURE
- ACTION-SPORTS
- CHILDREN

YOUR BASIC CAMERA A Lifetime Investment

There is no camera we know of that can take the place of a Press Camera for all-around excellence in picture making of all types. Wonderful pictures can be made with a miniature and you can be a past master at thermomentering your way through some fancy fine-grain developing—but the negative is too small for retouching. You can tote an 8x10" View Camera around and get some wonderful shots but you'll wear yourself out doing it. Here in the 4x5 inch press you average the advantages of all types of cameras and pick up a few additional advantages to boot. If it's the one best camera you are looking for—for all types of work—then this is the camera for you.

YOU GET ALL THESE EXPENSIVE FEATURES in the 4x5 SPEED PRESS

DOUBLE EXTENSION BELLOWS

Durable, flexible, square-type bellows will stay light tight through years of normal service. Folds to permit the use of extreme wide angle lenses—extends 14 inches for use with telephotos. With a normal lens to cover a 4x5, subjects can be photographed actual size—and with a shorter or wide angle lens they may be enlarged.

DROP BED

The front bed of the camera may be dropped 20° from horizontal. Extreme wide angle lenses may be used without fear of the bed cutting off part of the picture. This adjustment will also prove of value when the camera cannot be lowered to the desired level for proper, distortion-free image of the subject.

V-GROOVED EXTENSION BED

Rugged metal bed extension track rides in a constantly aligning V-groove to hold the lens standard in proper plane with the film when the bellows are fully extended. The friction drag on the focusing knobs have automatic take-up. The focus stays where you put it—there is no back-lash when the bellows are fully extended.

LIGHT WEIGHT

That light weight feature (only 4½ lbs.) of the B&J Speed Press shouldn't be taken too lightly. It's a mighty important factor to the man who is on his feet for hours at a time with camera in hand.

RUGGED "U" STANDARD

The "U" Standard which supports the lens is exceptionally rugged in design. It is mounted on the focusing track with extra large bearing surfaces to maintain the lens in perfect parallel plane with the film. On the rugged "U" framework the lens may be raised or lowered, tilted or shifted sideways as necessary for the picture at hand.

RISE, FALL AND TILT

The slotted sides of the upright standards of the lens supporting U-frame act as an aligning guide and track for the rise, fall and tilt adjustment of the lens. An overall adjustment of 2½ inches is provided. An important and unique feature is that the front tilts on the center line of the lens.

SIDE SHIFT

The bottom or base of the "U" standard provides for shifting the lens right or left over an adjustment range of 2" on each side. A lever friction lock holds this adjustment at any desired point.

FOCUS LOCK

A cam-type, lever-operated friction lock mounted on the camera bed provides a convenient and positive-acting means for securely locking the focus at any desired position. While seldom used, there are times when you will be thankful it's there—especially when shooting action that takes place at a fixed distance from the camera.

OPTICAL VIEW FINDER

The optical view finder shows a brilliant image, true to size for use with any normal 4x5 inch lens. It is mounted stationary on the camera top and framing indicators show picture coverage for both vertical and horizontal compositions. The finder is fitted with a parallax adjustment for correcting the field of view when making close-up exposures.

REVOLVING BACK

With the 4x5" B&J Speed Press you always snap your pictures with the camera in upright position. A quarter turn of the back adjusts the camera for vertical or horizontal pictures. The back revolves thru a full 360°

GROUND GLASS FOCUSING

The fine-grained ground glass focusing screen on the Speed Press shows a brilliant, finely detailed image. It is scored vertically and horizontally for easy perspective.

BEAUTIFULLY BALANCED

Compact, light weight—perfect balance is the only description for the feel of the camera in use. Folds compactly to only 7¼x8¾x3½" and weighs only 4½ lbs.

WIRE SPORTS FINDER

Swings up when wanted for use and automatically locks in proper position. Invaluable when shooting action shots as it enables the operator to follow fast-moving objects and keep them properly framed in the picture area. Folds down over the "U" standard when not in use.

REMOVABLE LENSBOARD

Lens board measures 4x4 inches—large enough to hold a big, high speed lens. Extra lens boards are available for those who boast of more than one lens. They may be interchanged at will. And it's a big convenience for those who make their one lens pinch hit on an enlarger.

ALL-METAL BODY

Made of airplane aluminum—to provide a big safety factor in strength while keeping the weight down to 4½ lbs., less lens. This rugged all-metal body will withstand years of knock-about service. You can sit on it to hide it. Unless you tip the scales well over 200 pounds you can even (when it's closed) stand on it.

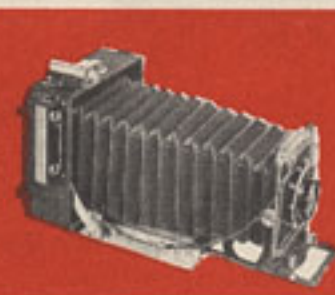
GENUINE LEATHER COVERING

You'll like the spanking new, rich looking, business-like appearance of the B&J Speed Press, with its attractive grained-leather covering. In fact, you'll want to keep it looking that way as long as possible—but long after the newness has worn off you can depend on your B&J Speed Press to keep bringing home some mighty fine negatives.

PICTURE STORY OF THE FAMOUS B & J ALL METAL (Genuine Leather Covered) 4x5" PRESS CAMERA



SIDE SWING ADJUSTMENT from center—gives overall displacement of 3½" from extreme right to extreme left.



DOUBLE EXTENSION BELLOWS provides maximum span of 14". Fine for "big image" close-ups and "long focus" lenses.



20° BED DROP adapts camera to difficult "close-up" work . . . may be used in conjunction with or independently of other adjustments.



REMARKABLE FLEXIBILITY in its many adjustments adapts the B & J Press Camera for use in the most difficult types of angle photography.



THE TELESCOPIC VIEW FINDER shows a brilliant image, masked for horizontal and vertical composition. With parallax compensator.



TRIPOD SOCKET, with standard thread, securely anchored in large metal plate, bolted through metal body provides wider safety factor.



360° REVOLVING BACK rotates from vertical to horizontal instantly . . . an invaluable aid when working with a tripod.



HEAVY LEATHER STRAP side handle steadies the camera for sighting and exposing . . . provides added convenience for carrying.



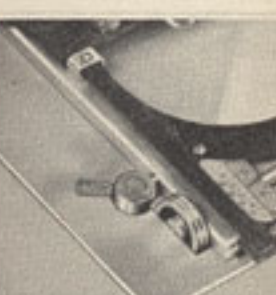
CALIBRATED GROUND GLASS makes for quick and easy composition. Focusing screen ruled in ¼" horizontal and vertical calibrations.



TELESCOPING TRACK with V groove for smooth focusing action. It is self-aligning and rigid, even at full bellows extension. Helical gears.



THE LARGE 4 x 4" LENSBOARD is instantly removable. Lenses of different focal lengths are readily interchanged.



ACCURATELY CALIBRATED FOCUSING SCALE of the vernier type is conveniently placed for easy reference when focusing.

The ONE CAMERA that serves you best in every exacting branch of fine PRESS PHOTOGRAPHY.

Only \$84.50 buys your basic outfit.

Since its inception the B&J Speed Press Camera has captured the imagination of Press Photographers and advanced amateurs the country over. This great camera in its popular 4x5 inch size, less lens sells for only \$84.50. This modest price on a modern press camera has enabled thousands of serious-minded photographers to elevate their hobby from the miniature and other smaller types of cameras to the proven, result-getting Press Camera. In newspaper work, good pictures are a necessity and to this end price is no barrier. Yet the newspapers of the country have almost universally adopted the Speed Press Camera as the one best suited to bring back good negatives under the wide and trying range of conditions faced by the Press Photographers.

BEST FOR "ALL-AROUND" PHOTOGRAPHY

The B&J Speed Press brings to the Press Photographer unusual adaptability to the widest possible range of photographic work. From posed portraits to lightning-sports actions. From docile table-top photography to train wrecks, fires, accidents or what-have-you. The B&J Speed Press takes them all in its stride and here is why. From a standing start with the camera folded you are ready to snap the shutter in a matter of split seconds. Focusing may be done from either side of the bed—using either the focusing scale or the ground glass, if time permits. Every control—every adjustment on the camera is designed for speed in use and convenience in operation. The long bellows contributes to the versatility by permitting the use of long or short focal length lenses—enables you to get perfect composition in your pictures.

DESIGNED TO GIVE YEARS OF SERVICE

A most important requisite of any camera destined for news photography is an ability to withstand knock-about service and use. No camera takes a beating like the press camera in active news photography. Throw it in the car and yank it out. Use it on the business end of a tripod tucked under your arm to ram your way through a crowd to the scene of action. We don't recommend that you do these things to or with your Press Camera—but we do say that the B&J Speed Press will take that kind of treatment and come up smiling. Its rugged, all-metal body combines light weight with extreme strength. It is beautifully finished in grained leather. You'll be proud of its sleek appearance . . . but we are frank to admit that you can scuff the leather even though you can't dent the metal body . . . and we even recommend that you purchase a protective carrying case at the first opportunity to keep the camera looking spanking brand new as long as possible.

★ Economize! Buy the Complete Outfit as Listed Below.

ECONOMY OUTFIT No. 501 CH

4x5 B & J Press Camera as described complete fitted with imported 5¼ inch (135mm) F:6.3 anastigmat lens, coated for increased detail and contrast, in FLASH-SYNCHRO shutter, speeds to 1/200 sec.

\$115⁰⁰

COMPLETE

PROFESSIONAL OUTFIT No. 502 CH

4x5 B & J Speed Press Camera
127mm F:4.7 Kodak Ektar coated lens in Flash Supermatic shutter,
Kalart Range Finder
Kalart Focuspot Attachment
Kalart Master Flashing Unit
1 Film Holder
De Luxe Carrying Case

\$234⁸⁴

COMPLETE

INDUSTRIAL OUTFIT No. 503 CH

4x5 B&J Speed Press Camera
127mm F:4.7 Kodak Ektar coated lens in Flash Supermatic shutter
Kalart Range Finder
White Ray Flash Unit
1 Film Holder
De Luxe Carrying Case

\$240⁰⁹

COMPLETE

DE LUXE OUTFIT No. 504 CH

4x5 B & J Speed Press Camera
135mm F:4.7 Wollensak Raptar coated lens in Rapax Synchro shutter
Kalart Range Finder
Kalart Focuspot Attachment
Kalart Master Flashing Unit
1 Film Holder
De Luxe Carrying Case

\$248⁶⁸

COMPLETE

RESEARCH OUTFIT No. 505 CH

4x5 B & J Speed Press Camera
135mm F:4.7 Wollensak Raptar coated lens in Rapax Synchro shutter
Kalart Master Flashing Unit
Film Holder

\$188³³

COMPLETE

PRESS OUTFIT No. 506 CH

4x5 B & J Speed Press Camera
135mm F:4.5 Imported Anastigmat coated lens in Rapax shutter
Kalart Range Finder

\$192⁴⁵

COMPLETE

RECOMMENDED LENSES for the B&J 4x5" PRESS



If you already have a lens for your B&J Speed Press, all you need do is mount it on the lens board to put your camera in action. If you have no lenses, we urge you to make your selection from the following listings. These lenses have been tested and proven on press cameras—and if you order your lens with the camera, we will mount it for you and calibrate the focusing scale to it at no extra charge.

CARL MEYER WIDE ANGLE

3½" (90mm) F:6.8 in Prontor II Shutter Flash Synchro, Delayed Action, Speeds B, 1 to 1/200 sec., mounted on 4x4", wood lens board with "Time" lock—stops down to F:32. — Coated. EACH \$59.50

WOLLENSAK SERIES III WIDE ANGLE

3½" (90mm.) F:6.8 in Rapax shutter (speed 1 to 1/400 sec., T&B), Coated. EACH \$78.76

KODAK EKTAR

5" (127mm.) F:4.7 in Flash Supermatic shutter (speed, 1 to 1/400 sec., T&B), Coated. EACH \$71.50

IMPORTED ANASTIGMAT

5¼" (135mm.) F:4.5 in Rapax shutter (speed, 1 to 1/200 sec., T&B), Coated. EACH \$87.75

WOLLENSAK RAPSTAR

5¼" (135mm.) F:4.7 in Rapax Synchro shutter (speed, 1 to 1/400 sec., T&B), with built-in flash synchronization. Coated. EACH \$85.34

Without Built-in Flash Synchro \$57.84

ILEX PARAGON

6½" (165mm.) F:4.5 in Acme Synchro shutter (speed, 1 to 1/200 sec., T&B), with built-in flash synchronization. Coated EACH \$139.34

WOLLENSAK RAPSTAR TELEPHOTO

15" F:5.6 in Alphax shutter (speed 1/10 to 1/50 sec., T&B), Coated. EACH \$206.22

Mounting any of the above lenses and shutters to camera (when camera and lens are purchased at the same time) NO CHARGE
Mounting customer's lens and installing vernier scale to match \$3.00

Order by Number 509H

Get the Best Accessories for Your B & J Press Camera

EXTRA VERNIER FOCUSING SCALE

For 3½, 4½, 4¾, 5¼, 6, 6½, or 7½ inch lenses. — EACH (specify which) 90c

VIEW FINDER MASKS

For 5, 5¼, 6, 6½, or 7½ in. lenses. (Specify which). EACH \$ 1.25

PRISM RANGE FINDER — Each 29.95

Range Finder Installation. — Net 3.50

DE LUXE CARRYING CASE for 4x5" ..

Holds camera, holders, flash gun, bulbs, etc. EACH \$16.95

4x4 INCH LENS BOARD — Each \$ 1.50

4x5 INCH FILM HOLDERS — Each .. \$ 4.19

4x5" FILM PACK ADAPTER — Each .. \$ 9.20

Order by Number 507H

IDEAL "A" TRIPOD

Sturdy Wood Construction — EACH \$13.50

HOLLYWOOD JR. TRIPOD

3-section All Metal Tripod. — Each \$ 21.90

FOCUSPOT ATTACHMENT for Rangefinder—

(Specify range finder when ordering)—EACH.....\$ 9.95

KALART FLASH EQUIPMENT

MASU for Regular Shutter. \$ 24.60

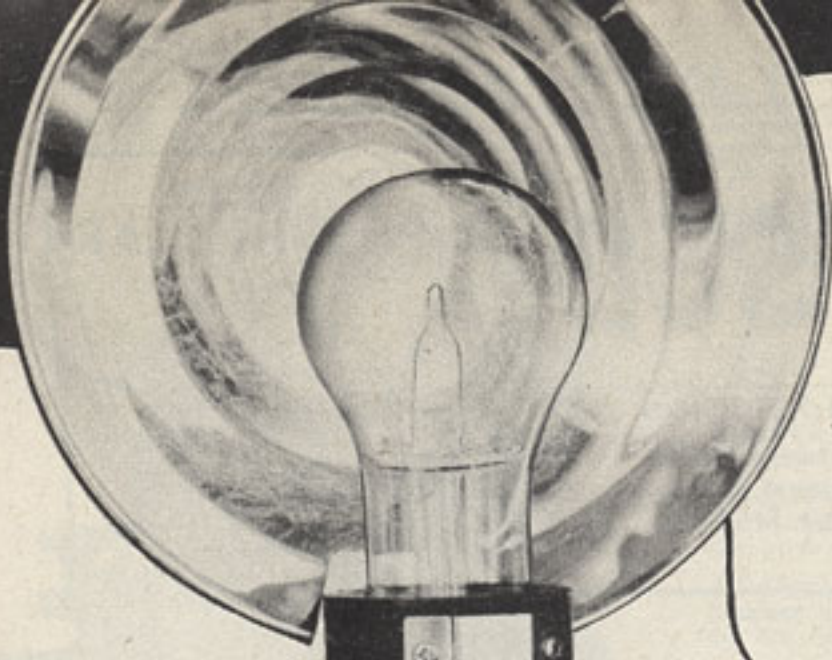
MFUGI for Synchronized Shutters. — EACH \$ 14.30

WHITE RAY FLASH EQUIPMENT

Model S-G (Solenoid Type) for Regular Shutters. — EACH \$38.00

Flashing Unit for Synchro Shutters. — EACH \$29.50

Order by Number 508H



The **B&J** 2 1/4 x 3 1/4 **MINIATURE SPEED PRESS CAMERA**

Now Only \$ **69⁵⁰**
LESS LENS AND ACCESSORIES

Order by Number 801H

HAS SPECIAL
DROP BED
FOR WIDE
ANGLE WORK

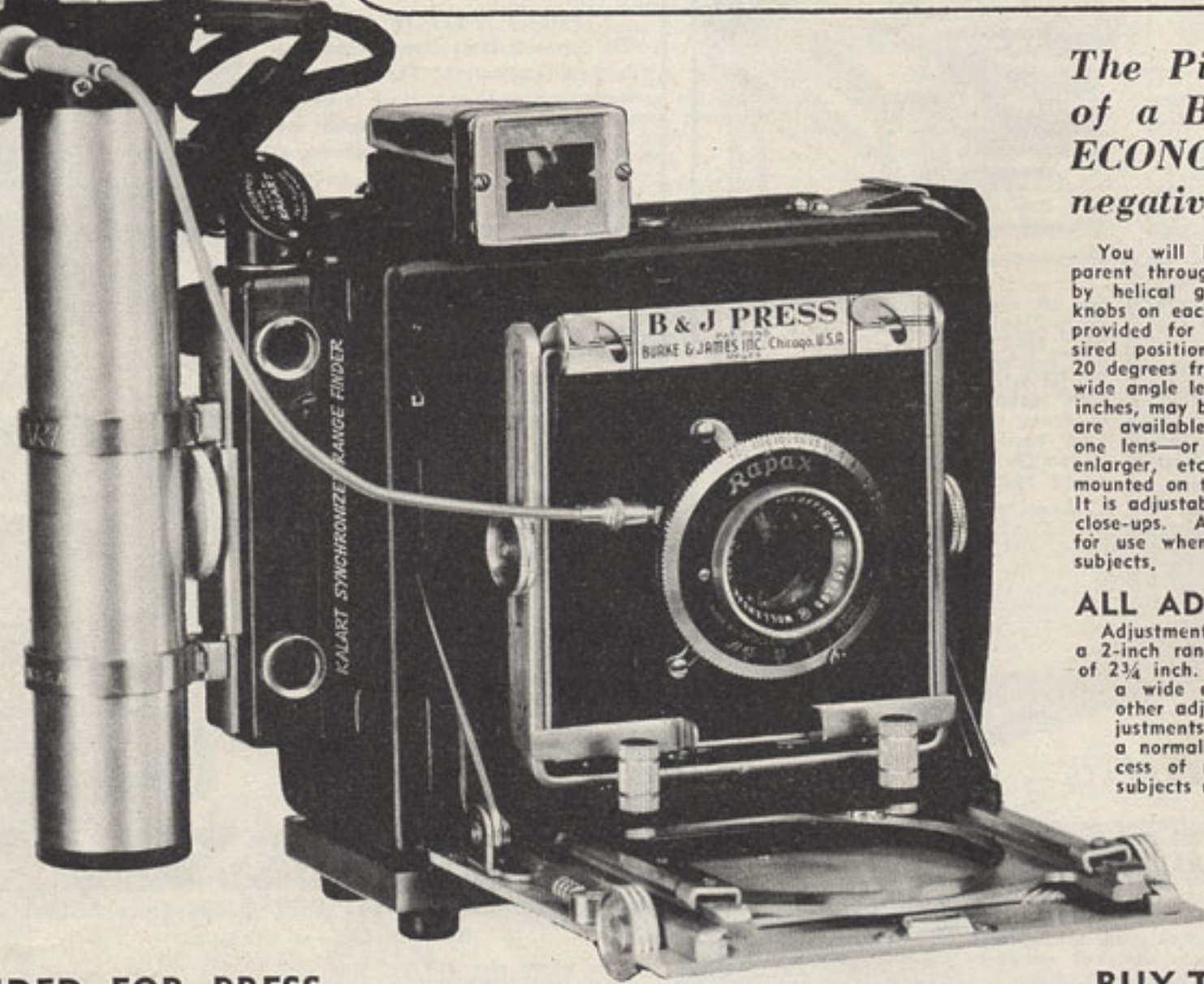
FOUR-SIDED
FOLDING
HOOD FOR
FOCUSING
SCREEN

REMOVABLE
LENS BOARD

PARALLAX
CORRECTED
OPTICAL
FINDER

**RECOMMENDED FOR PRESS
WORK AND ALL GENERAL PHOTOGRAPHY**

You do not have to be a press photographer to reap the benefits of a press type camera. No matter what branch of photography you prefer, portraits, candid, pictorials, copying, table-top, etc., your best bet for all-around versatility is the press camera. It is tops for all types of sport and action pictures. Use it indoors or out—on a tripod in the studio or hand held in the field. Remember, it's the negative that makes the picture and the camera that makes the negative. Don't sell your picture-making ability short with inadequate equipment.



The Picture-taking ability of a BIG camera with the ECONOMY of MINIATURE negative size . . .

You will like the fine detailing so readily apparent throughout the miniature press. Focusing is by helical gear on a metal track, with focusing knobs on each side of the bed. A focus lock is also provided for securely locking the focus at any desired position. The camera bed may be dropped 20 degrees from normal to permit the use of extreme wide angle lenses. The lens board, measuring 3 1/4 x 3 1/4 inches, may be instantly changed and extra lens board are available for those who work with more than one lens—or for switching the lens from camera to enlarger, etc. The eye-level optical view finder, mounted on the camera top, shows a brilliant image. It is adjustable for parallax correction when shooting close-ups. An auxiliary wire finder is also provided for use when shooting sports and other fast-action subjects.

ALL ADJUSTMENTS

Adjustments include rise and fall of the lens over a 2-inch range—and a side shift from right to left of 2 3/4 inch. In addition, the lens may be tilted over a wide arc to correct and compensate for the other adjustments. The extreme range of the adjustments provided exceeds the covering power of a normal lens—giving a safety factor far in excess of requirements for photographing difficult subjects under difficult conditions. While the camera is not fitted with a revolving back, its light weight and handling ease permits the camera to be instantly turned as necessary for horizontal or vertical picture composition—and tripod sockets are provided at bottom and side of the camera.

**BUY THE BASIC CAMERA—
ADD ACCESSORIES AS YOU NEED THEM**

You can be the proud owner of a B&J Miniature Speed Press without letting yourself in for a heavy initial investment. Camera only at \$69.50, plus a lens gets you off to a flying start. Then, and as the need arises, you can add standard press accessories like a coupled range finder and a flash gun. When your camera is equipped with these, you are ready for any picture assignment. You can start out with confidence in the knowledge that your equipment is right for the job.

PORTRAITURE



NEWS PICTURES



PICTORIALS



INTERIORS



You Are The Master of Every Picture Making

FOR PERFECT PICTURES EVERY TIME— IN ALL BRANCHES OF PHOTOGRAPHY

Here in one streamlined miniature you get all the fine features found in a BIG PRESS Camera!

Here is a Press Camera! It brings you all of the essential features of the larger 4x5 inch Press units in one small streamlined camera that will serve your every need for fine negative making in all branches of photography. And in addition it brings you the economy of small ($2\frac{1}{4} \times 3\frac{1}{4}$ " negative size. Small enough for real economy in operation—large enough to permit enlargements up to 8x10" or 11x14" with all the snap and punch that distinguishes outstanding "prize winning" prints. It gives to you both the speed and the simplicity of operation found in the highest priced cameras.

TAKES ALL PRESS ACCESSORIES

This great $2\frac{1}{4} \times 3\frac{1}{4}$ " Speed Press may be purchased without lens and accessories for only \$69.50. If you now have a suitable lens that is mounted in a shutter, it can be readily fitted to the camera and you are ready to venture forth on a thrilling picture-taking experience. If you have no lens, one may be purchased from the large assortment shown elsewhere in this catalog—and if you order it with the camera, it will come to you properly mounted with the focusing scale calibrated to match. That is all you need to get started. Other accessories, flash gun, range finder, etc., may be added later as the need for them arises.

GROUND GLASS FOCUSING

The ground glass focusing panel is framed with a four-sided folding light hood that shields it from stray light—lets you see a more brilliant image to focus on. The fine-grained glass itself is calibrated with parallel, horizontal and vertical lines as an aid in eliminating distortion. Lets you instantly check trueness of both the horizon line or any upright line. The light hood when folded acts as a protective cover for the ground glass.

DOUBLE EXTENSION BELLOWS

The rich black bellows are of the double extension type covering a full span of 7 inches—enough to photograph objects actual size with a normal lens and oversize with a wide angle lens. The fine construction of the bellows assures years of trouble-free, light-tight service. The track extension that carries the bellows forward rides in a V-groove track, metal to metal to maintain perfect alignment of the lens standard throughout the focusing adjustment.

INSTANTLY READY FOR USE

The $2\frac{1}{4} \times 3\frac{1}{4}$ " Speed Press is just a smaller edition of the big 4x5 inch Press Cameras that are practically standard equipment in modern newspaper work. Starting from scratch with the camera folded, you are ready for picture-taking action in a matter of split seconds. Press a button and the bellows drops into position. Draw the lens standard forth—it clicks into position at infinity. Set the shutter, focus for distance, bring the camera up to eye level, center your subject in the telescopic finder and snap. That is all there is to it. When time permits, focusing may be done on the ground glass for a more detailed study of picture composition and detail.

RUGGED CONSTRUCTION

The camera is perfectly balanced and of rugged construction throughout. It is designed to withstand the knocks, bumps and jars encountered in everyday press service. Camera is all metal except outer housing of hardwood to absorb shocks! It is attractively covered in satin chrome. The heavy leather handle permits you to hold the camera steady with one hand while changing film or focusing with the other.

RECOMMENDED LENSES FOR $2\frac{1}{4} \times 3\frac{1}{4}$ "

PERLE WIDE ANGLE

$3\frac{3}{8}$ " (65 mm) F:6.8 self-cocking shutter (speed 1 to 1/300 sec., T&B) Coated. EACH (Federal Tax \$5.00)\$34.50

WOLLENSAK RAPTOR

$2\frac{3}{8}$ " (65mm.) F:6.8 Rapax shutter (speed 1 to 1/400 sec., T&B) Coated. EACH\$75.60

WOLLENSAK RAPTOR LENS

4" (101mm.) F:4.5 Rapax shutter (speed 1 to 1/400 sec., T&B) Coated. EACH\$49.77

Same as above in RAPAX X-SYNCHRO shutter (for strobe only)\$58.57

Same as above in RAPAX full SYNCHRONIZED shutter for X-F-M settings\$72.60

KODAK EKTAR

4" (101mm) F:4.5 EKTAR in Kodak Synchro Rapid shutter (speed 1 to 1/800 sec., T&B) Coated. EACH\$77.50

TELEPHOTO LENS

8" F:5.6 Wollensak coated lens in full SYNCHRO Rapax shutter up to 1/400th sec. — EACH\$143.12

10" F:5.6 Wollensak coated lens in full SYNCHRO Rapax shutter up to 1/250th sec. — EACH\$175.57

TELEPHOTO PORTRAIT

12" F:7.7 Dallmeyer (British) coated lens in Compur shutter 1 to 1/200 sec. T&B. invaluable for those distant shots and large clear portraits. EACH\$134.50

Order by Number 907H

PARTS & ACCESSORIES FOR $2\frac{1}{4} \times 3\frac{1}{4}$ "

$2\frac{1}{4} \times 3\frac{1}{4}$ " Film Holder\$3.45

$2\frac{1}{4} \times 3\frac{1}{4}$ " Film Pack Adapter\$7.48

Extra Focusing Scale for: $4\frac{1}{8}$, $4\frac{3}{8}$, $5\frac{1}{8}$, 6, $6\frac{1}{2}$, or $7\frac{1}{8}$ inch lenses (specify which). EACH\$9.90

View Finder Masks for: $3\frac{1}{2}$, 4, $4\frac{1}{8}$ or 4-2/3 inch lenses (specify which). EACH\$1.25

Kalart Prism Range Finder.....\$29.95

Range Finder InstallationNet \$3.50

$3\frac{1}{4} \times 3\frac{1}{4}$ inch Lens Boards—EACH.....\$1.35

Standard Carrying Case. Accommodates camera and 6 holders\$7.50

DeLuxe Carrying Case. Holds camera, 12 holders, flash gun, flash bulbs\$16.95

Hollywood Jr 3-Section Tripod\$21.90

Order by Number 908K

COMPLETE MINIATURE SPEED PRESS OUTFITS

ECONOMY OUTFIT No. 901H

$2\frac{1}{4} \times 3\frac{1}{4}$ " B&J Speed Press Camera complete with $4\frac{1}{8}$ " F:4.5 Voigtlander coated lens in SYNCHRO shutter with built-in self timer. Speeds 1/25th to 1/200th sec., and bulb. COMPLETE\$98.50

PORTRAIT OUTFIT No. 902H

$2\frac{1}{4} \times 3\frac{1}{4}$ " B&J Speed Press Camera equipped with $4\frac{1}{8}$ " F:4.5 Kodak Anastigmat coated lens in Prontor II internally SYNCHRONIZED shutter. Built-in Self-timer. Speeds 1 to 1/250 sec. and bulb. COMPLETE\$124.50

DE-LUXE OUTFIT No. 903H

$2\frac{1}{4} \times 3\frac{1}{4}$ " B&J Speed Press Camera $4\frac{1}{8}$ " F:4.5 Wollensak Coated lens in Rapax full SYNCHRO shutter, 1 sec. to 1/400th, T&B. Kalart Ranger Finder, installed. Kalart Master Automatic Flash Gun 3 B&J All-Metal Film Holders. COMPLETE\$200.00

PRACTICAL OUTFIT No. 904H

$2\frac{1}{4} \times 3\frac{1}{4}$ " B&J Speed Press Camera with $4\frac{1}{8}$ " F:4.5 Coated KODAK Anastigmat lens in SYNCHRONIZED Vario shutter with self-timer and speeds to 1/200th sec. 3 B&J All-Metal Film Holders. COMPLETE\$115.00

SUPERB OUTFIT No. 905H

$2\frac{1}{4} \times 3\frac{1}{4}$ " B&J Speed Press Camera $4\frac{1}{8}$ " F:4.5 Kodak Ektar coated lens in latest SYNCHRO rapid shutter, speeds 1 to 1/800th sec., T&B. Kalart Range Finder installed. Kalart Master Automatic Flash gun 3 B&J All-Metal Film Holders. COMPLETE\$205.00

FAST OUTFIT No. 906H

$2\frac{1}{4} \times 3\frac{1}{4}$ " B&J Speed Press Camera with $4\frac{1}{8}$ " F:4.5 Wollensak coated lens in Rapax shutter, speeds to 1/400th sec., T&B. 3 B&J All-Metal Film Holders. COMPLETE\$130.00

ILLUSTRATIVE



ARCHITECTURE



TABLE-TOPS



COPYING, ETC.



Problem With The $2\frac{1}{4} \times 3\frac{1}{4}$ **B&J** SPEED PRESS

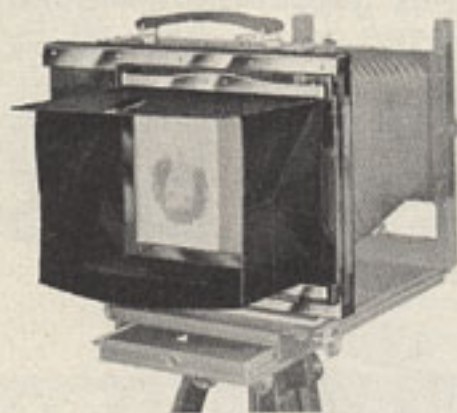


America's finest 4x5 -- 5x7 Commercial View and Portrait Cameras

*The CAMERA of 1000 uses -- for every
Professional and Amateur need!*

The Commercial View Camera with its longer bellows, its wide range of adjustments and general versatility has become the favorite of Professional and Amateur photographers the world over. It is unexcelled for fine studio use in pictorial, general commercial, portraiture and illustrative photography. In these fine B&J Commercial View Cameras you find the ultimate in practical design—plus a range of adjustments that is far in excess of normal requirements.

SPECIAL STUDIO MODELS With Sliding Carriage Backs



Makes two exposures on one film. A real time, money and film saver. Of fine construction with smooth sliding action.

WITH 5x7" SLIDING BACK

Makes two 3½x5 in. exposures on one 5x7" film. EACH.....

WITH 4x5" SLIDING BACK

Makes two 2½x4 in. exposures on one 4x5" film. EACH.....

Order by Number 1203H

CALIBRATED FOCUSING SCREEN

These cameras feature a new type calibrated focusing screen—providing visible hairlines spaced ¼-inch apart both horizontally and vertically for quickly eliminating distortion with the swing and tilt adjustments. A four-sided folding light hood eliminates the need of a separate focusing cloth. It acts as a protection for the ground glass when folded.

REVERSIBLE BACK — 21 IN. BELLOWS

The full 21-inch bellows permits the use of long focal length lenses. The camera back is instantly reversible for vertical or horizontal composition. Lens board measures 5¼x5¼ in. to accommodate large aperture lenses and behind-the-shutters up to 2" opening. Read the complete list of special features in the column at the right.

4x5 IN. CAMERA

Complete camera as described, less lens, but with 5¼x5¼ inch lens board, and folding light hood as illustrated. Measures only 5¼x11¼x9½ inches when folded. Weight 6½ lbs.

EACH, ONLY

\$74⁵⁰

Order by No. 1201H

5x7 IN. CAMERA

Complete camera as described, less lens. Has 5¼x5¼ inch lens board, reversible back and folding light hood. Measures 5¼x11½x9¾ in. when folded. Weight 7½ lbs.

EACH, ONLY

\$84⁵⁰

Order by No. 1202H

RECOMMENDED LENSES AND ACCESSORIES

LENSES FOR 4x5" ONLY

- 3½" F:6.8 Carl Meyer Wide Angle in Synchro shutter, speeds 1/25 to 1/200 sec., Coated\$55.00
- 3½" F:6.8 Wollensak Wide Angle Lens in Rapax (Coated), covers 4x5"..... 78.76
- 6½" F:4.5 Carl Zeiss Tessar (Coated) in Compur Shutter135.00
- 6½" F:4.5 Ilex Paragon Lens in Universal shutter (Coated), covers 4x5"..... 82.50
- 6¾" F:4.5 Eastman Kodak Anastigmat Coated in self-cocking shutter 79.50

LENSES FOR 4x5" and 5x7"

- 7½" F:6.8 Special Anastigmat in Self Cocking shutter (Coated)\$39.50
- 7½" F:4.5 Wollensak Series II in Alphax (1 to 1/100 sec.) shutter, Lenskoted, covers 5x7 inches 99.46
- 8" F:2.9 Dallmeyer Speed Pentac (Coated) in Betax shutter special mounting..199.50
- 8¼" F:4.5 Steinheil Anastigmat, Coated in barrel with iris139.50

Carrying Case, holds camera, holders and accessories 10.95

Focusing Cloth 36x48" 2.28

5x7" Sliding Carriage Back 34.50

5x7 to 4x5 Sliding Carriage Back permits two exposures on 4x5"..... 34.50

4x5" Film Holders 4.15

5x7" Film Holders 4.80

B & J Portable Studio Stand 33.90

Order by Number 1204H

USE WITH OR
WITHOUT
THE EXTEN-
SION BED

Listed at the left are recommended accessories for use with the 4x5 and 5x7 inch B&J Commercial View Cameras. Order your accessories with your camera whenever possible. This assures your receiving the proper size and type to go with the camera.

THESE GREAT FEATURES MAKE THE B&J VIEW THE OUTSTANDING VALUE IN ITS PRICE CLASS

BELLOWS: Bellows provides full 21 inch extension. Demountable extension bed with metal inset track for smooth operation—and perfect back alignment.

FULL HOODED FOCUSING SCREEN: Has full size ground glass with folding type focusing hood. Hood cuts off top, bottom and side light—makes it easy to arrange composition.

WIDE FOCUSING TRACK: Wide focusing track of all metal construction, provides for smooth easy rack and pinion focusing. Lock knob permits adjustment of friction on the focusing action to suit the operator.

RISING - FALLING ADJUSTMENTS: Front adjustments include a full 5 inch rise with 3¼ inch vertical shift. Rear adjustments include 7 inch rise with full 5 inch vertical shift.

UNLIMITED SWING - TILT: The angle of horizontal swing on both front and rear and the angle of vertical tilt on both front and rear exceeds the capacity of the lens.

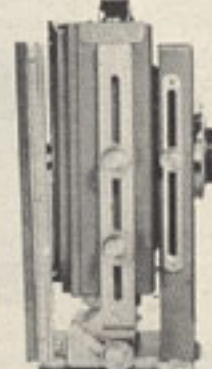
ATTRACTIVE FINISH: The camera is attractively finished in a durable silver-grey with red bellows. Metal trim in bright chrome finish.

REVERSIBLE BACK: The reversible back makes it simple to switch from vertical to horizontal pictures. Metal dowel pins and snap springs hold the back securely in position.

OVERSIZE LENS BOARD: Extra lens boards are available. They permit the instant interchange of lenses. The square bellows provide ample room for behind-the-lens shutters up to 2" opening.

FOLDS COMPACTLY:

The removable bed extension permits these cameras to fold compactly for easy portability. Carrying cases are available as shown in the accessory listing at the left. Will take all Packard Shutters up to 2" opening.



FOLDING
4-SIDED
LIGHT
HOOD

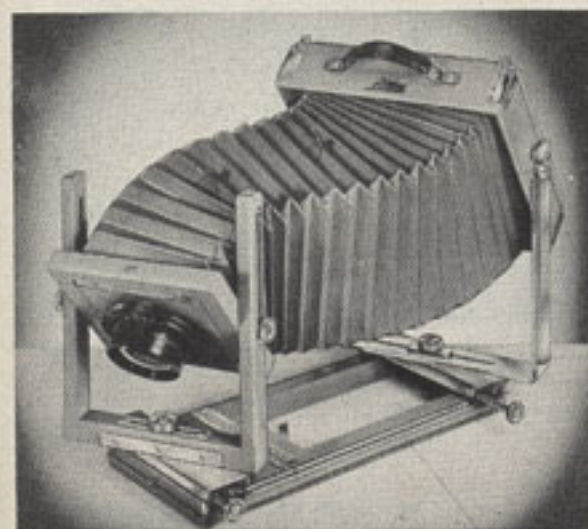
**THIS GREAT 8 x 10
COMMERCIAL
VIEW CAMERA \$109⁵⁰
(Less Lens)
NOW ONLY**
Order by Number 1301H

**Designed for all types of
exacting studio photography**

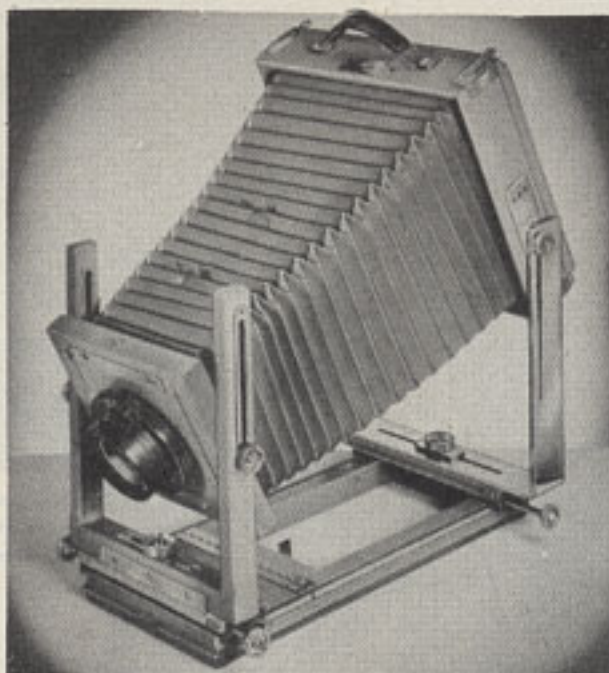
Here is the camera of cameras for general all-around studio use. For fine portraiture, still life, commercial studio, pictorial, illustrative and record photos as well as for copying, this great B&J 8x10" Commercial View has won the acclaim of photographers everywhere.

**Adjustment Range Exceeds All
Normal Camera Requirements**

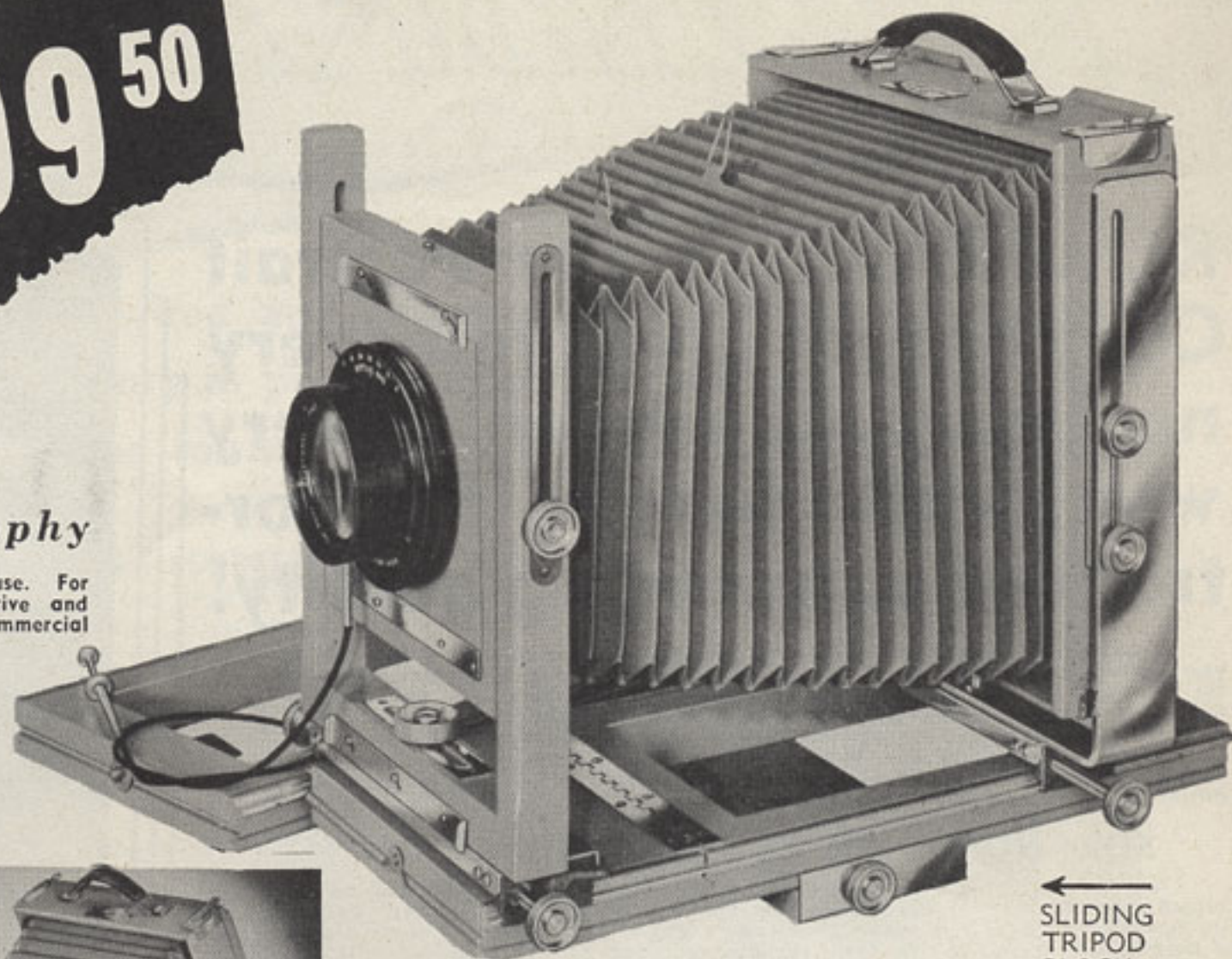
When you work with this fine camera you will come to appreciate more and more its general versatility and the wide range of adjustments it provides. For difficult angle shots where control of perspective is essential, you can take full advantage of the covering power of your lens. Note the illustrations below. The big, square type, 29 inch double extension bellows has extra deep gussets permitting these unusual angle adjustments without strain on the bellows.



The adjustment range of the B&J 8x10 inch View Camera far exceeds the normal covering power of a normal lens. It gives you safety reserve that is always there should it be needed.



Note the flexibility provided by the extra heavy slotted rear "U" standard. All tilt, swing, shift, rise and fall adjustments are extra large to give you added versatility and adaptability in operation.



SLIDING
TRIPOD
BLOCK

FOCUS FROM FRONT OR REAR

Focusing adjustments are provided at both front and rear of camera. The extra wide focusing track is recessed into the bed. The gear ratio on the rack and pinion drive has been computed to provide a smooth, positive focusing action with metal-to-metal contact. The tripod socket is mounted in a sliding block so that the camera can be perfectly balanced regardless of bellows extension or type of tripod being used.

FULL 29-INCH BELLOWS EXTENSION

The generously full bellows are of double extension type, opening a full 29 inches without strain. Full use of the swing, tilt, rise and fall adjustments may be had even when the bellows are extended. A separable bed extension gives compactness and portability. The calibrated focusing screen is etched with fine vertical and horizontal lines as an aid in securing perfect perspective while eliminating distortion. Special provision has been made for locking the camera back at any desired position on the camera bed.

**SPECIAL CAMERAS
on 8x10" Chassis**

Cameras with all the advantages—bellows extension, swings, tilts, front and rear focusing, large front-board, but with smaller negative sizes. Cameras built on the 8x10" B&J View chassis with the following backs:

Cameras with—

5x7" Sliding Carriage back (Makes 2-3 1/2 x 4" negatives on one 5x7" film).....\$127.50
Order by No. 1303H

4x5" Sliding Carriage back (Makes 2-2 1/2 x 4" negatives on one 4x5" film).....\$127.50
Order by No. 1304H

5x7" Back\$109.50
Order by No. 1305H

4x5" Back\$109.50
Order by No. 1306H

3 1/4 x 4 1/4" Back\$109.50
Order by No. 1307H

3 1/4 x 4" Back (Lant. Slide) \$109.50
Order by No. 1308H

2 1/4 x 3 1/4" Back\$109.50
Order by No. 1309H

**FOR PROFESSIONAL STUDIO, LABORATORY
AND ADVANCED AMATEUR USE**

An outstanding feature of the B&J Commercial View is its overall ruggedness. The reversible focusing back is of extra rigid construction, with high tension "film holder" retaining springs. The big sliding "U" standard at the camera back provides a rise adjustment of 7 inches and a side shift of 6 1/4 inches. The angle of adjustment on horizontal and vertical swing at both front and rear is unlimited. The front standard has a rise adjustment of 5 inches and a side shift of 3 inches.

FINELY DETAILED — BEAUTIFULLY FINISHED

You will like the attractive finish of the B&J Commercial View. Its unique construction accomplishes strength and rigidity without bulkiness. All moving parts and adjustments operate on metal to metal. The selected hardwood frame is attractively finished and polished—with metal trim in bright, durable chrome or satin. It's a camera you will be proud to own.

STANDARD 8x10" COMMERCIAL VIEW

Complete camera as illustrated, less lens. Has 6x6 inch lens board and conventional type reversible back that accommodates all standard film and plate holders. See column at right for recommended lenses and accessories. Camera when folded measures 6 1/2 x 14 3/4 x 12 3/4 inches. Will accept Packard Shutters up to 2 1/4" opening. Weighs 13 1/2 lbs.

Order by No. 1301H

NOW ONLY

\$109⁵⁰

**RECOMMENDED LENSES,
ACCESSORIES, ETC.**

Select your accessories from the following list. Our lens experts will be glad to assist you in the selection of a lens for any special purpose.

REDUCING BACKS —
8x10 to 5x7, 4x5 or 3 1/4 x 4 1/4".....\$ 21.50
8x10 to 5x7 SLIDING CARRIAGE BACK
Permits Two Exposures on 5x7"..... 39.50
LENSBOARD — 6x6" —..... 2.00
FILM HOLDERS 8x10—New Graflex—
Heavy Duty Type—Single Film
Capacity..... 3.50
B&J PORTABLE STUDIO STAND..... 33.90
CARRYING CASE—Holds Camera,
Holders, Lenses, etc. Weighs 7 lbs.
10 oz. Size 25"x9"x17 1/2"..... 15.95
FOCUSING CLOTH — 36x48" —..... 2.28
6" F:6.3 BAUSCH & LOMB Metrogon
Wide Angle Lens in Universal Shutter 199.50
6 1/4" F:12.5 WOLLENSAK WIDE ANGLE
LENS, in Rapax Shutter, Coated..... 93.62
12" F:4.5 GUNDLACH RADAR ANAS-
TIGMAT in Betax Shutter, Lenskoted 199.50
12" F:4.5 CARL MEYER ANASTIGMAT
in Betax Shutter, Lenskoted..... 189.50
14" F:5.6 COOKE AVIAR coated on 6"x6"
board, with Packard Shutter..... 212.00
19 1/2" F:6.3 BAUSCH & LOMB TESSAR
in Barrel, Lenskoted..... 165.50
19 1/2" F:7 BAUSCH & LOMB TESSAR
in Self Cocking Shutter, Ctd. 219.50
8x10" View takes all Packard Shutters up
to 2 1/4" opening.
Order by Number 1302H

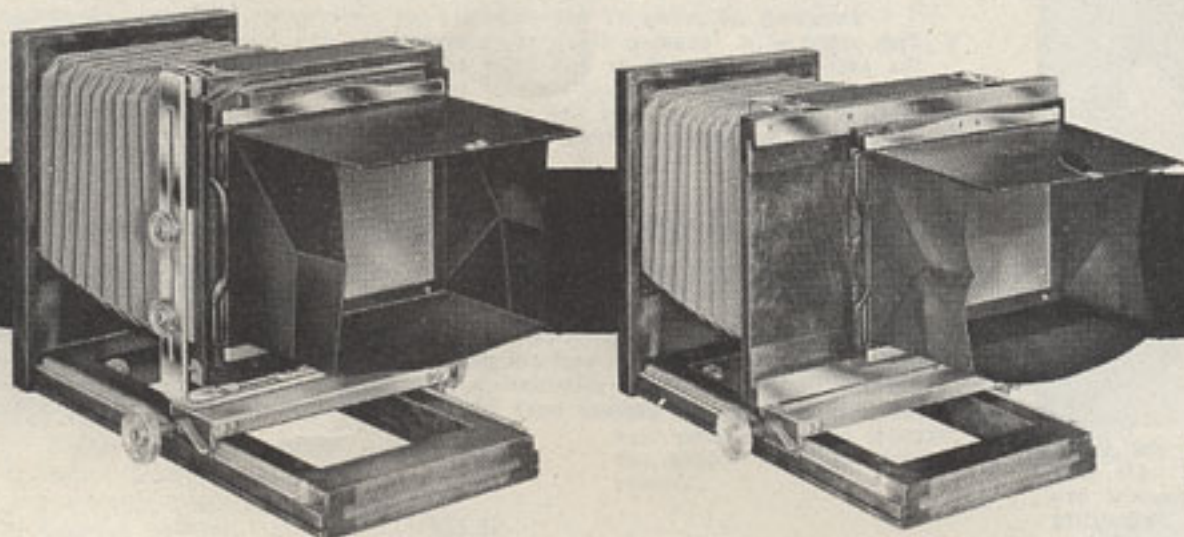
REMBRANDT *The new*

REMBRANDT—the Portrait Camera that gives you every necessary adjustment--every worthwhile feature for Portraits of outstanding quality!

If portraiture is your business or your hobby and you want to give full rein to your artistic ability, then by all means equip yourself with a Rembrandt. Because the Rembrandt is specifically designed for portraiture, it brings you every needed feature, every convenience—every required adjustment to let you produce portrait after portrait in a minimum of time, with a minimum of effort—with maximum glamour and quality in the finished picture. From dramatic theatrical poses to conventional bust, half, three-quarter or full length studies, your Rembrandt will let you exercise your artistic ability to the utmost.

FOR HOME OR STUDIO OPERATION

You can rely on your Rembrandt for both its picture-taking ability and on its rugged construction to see you through year after year of satisfactory service. Despite its husky construction, it is mighty good looking and on a tripod in the studio makes a business-like impression. In home portrait work and all outside assignments, its rugged construction enables it to take scuffs and buffs in its stride. You can expect great pictures from your Rembrandt—and no matter how difficult the shot, your Rembrandt will never let you down.

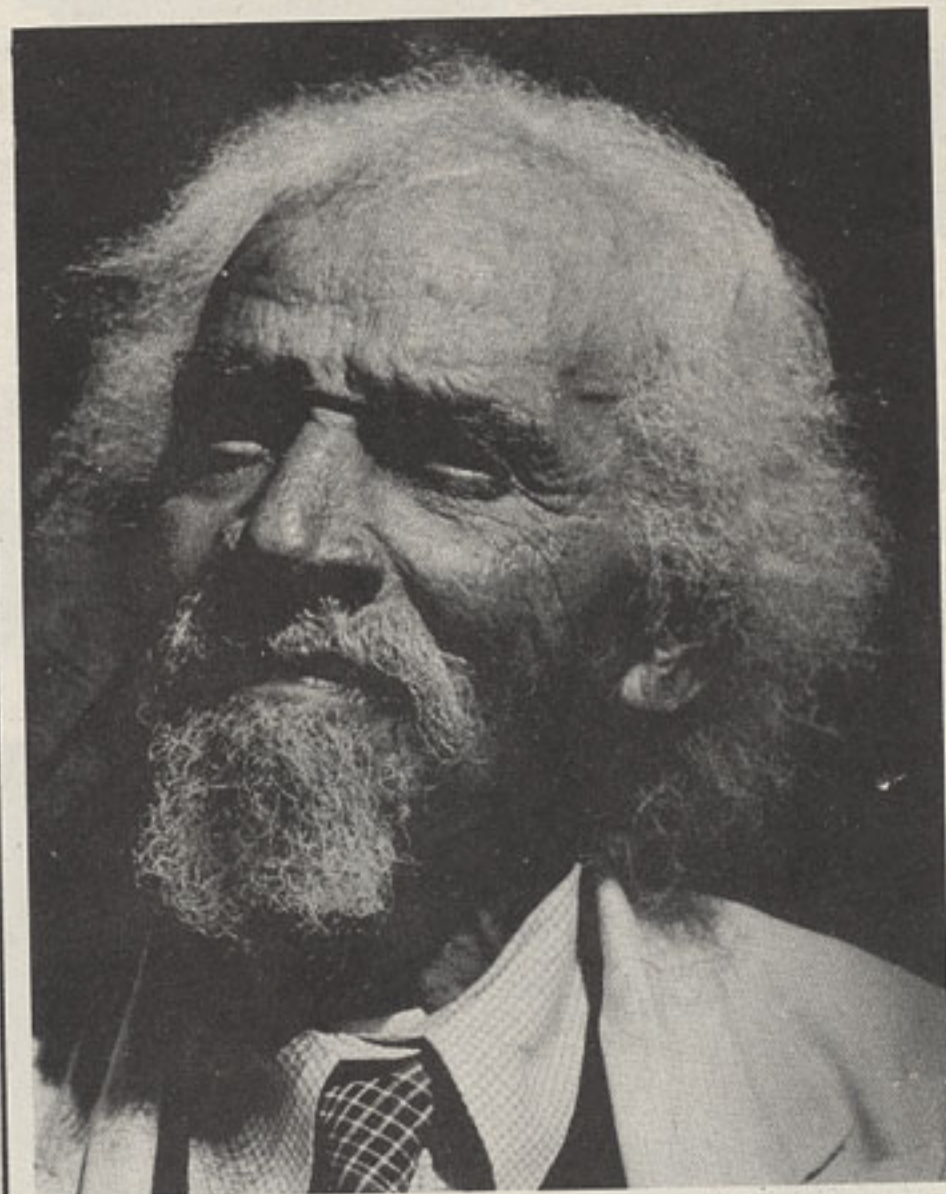


WITH REGULAR BACK

The illustration above shows the Rembrandt with its conventional back. Note the hood around the ground glass to cut off stray light. It folds to protect the ground glass when not in use. The focusing screen is scored with lines horizontally and vertically to help you eliminate distortion and get perfect alignment instantly.

WITH SLIDING CARRIAGE

Above you see the Rembrandt fitted with a sliding carriage back for making two exposures on each film. The sliding back brings the film to be exposed into the optical axis of the lens to assure fine detail. The sliding back is recommended in all cases where final prints are made by projection.



FOR PORTRAITS OF SPARKLING SNAP AND BRILLIANCE

A prime requisite of good portraiture is good lighting . . . and if you know your lighting, this great Rembrandt Portrait Camera will give you negative after negative of sparkling detail and brilliance, with clear, crisp highlights and deep, rich shadows. You'll like the convenience of its closely grouped controls. Dual controls let you work from either side with the rise and fall of the back, the tilt, and focus.

HARDWOOD FRAME FOR EXTRA STRENGTH

The Rembrandt boasts a rugged hardwood body that will retain its perfect alignment indefinitely. Rack and pinion focusing is metal to metal for lasting accuracy. A positive-acting, focusing lock securely anchors the focus where you want it. All adjustment knobs have automatic friction takeups—they cannot get loose or wobbly.

REMBRANDT 4x5" SERIES CAMERAS WITH REGULAR BACK

Complete camera with standard 4x5 inch back. Lens and shutter not included. Four-sided folding light hood on ground glass is standard equipment.

PRICE EACH, ONLY

\$69⁵⁰

Order by No. 1401H

WITH DIVIDING BACK

Standard 4x5 inch Rembrandt Camera fitted with divided sliding back to provide two 2 1/2 x 4 inch exposures on each 4x5 in. film, and also with 4x5" straight back. Lens and shutter not included. PRICE EACH, ONLY—

\$99⁵⁰

Order by No. 1402H

REMBRANDT 5x7" SERIES CAMERAS WITH REGULAR BACK

Complete camera with standard 5x7 inch back. Lens and shutter not included. Four-sided folding light hood on ground glass is standard equipment.

PRICE EACH, ONLY

\$69⁵⁰

Order by No. 1403H

WITH DIVIDING BACK

Standard 5x7 inch Rembrandt Camera fitted with divided sliding back to provide two 3 1/2 x 5 inch exposures on each 5x7 in. film, and also with 5x7" straight back. Lens and shutter not included. PRICE EACH, ONLY—

\$99⁵⁰

Order by No. 1404H

A GOOD LENS IS ESSENTIAL TO GOOD PORTRAITS

THE FAMOUS MONORAIL

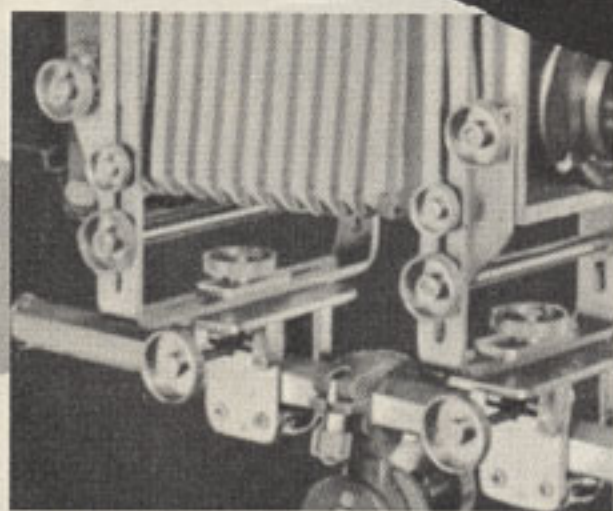
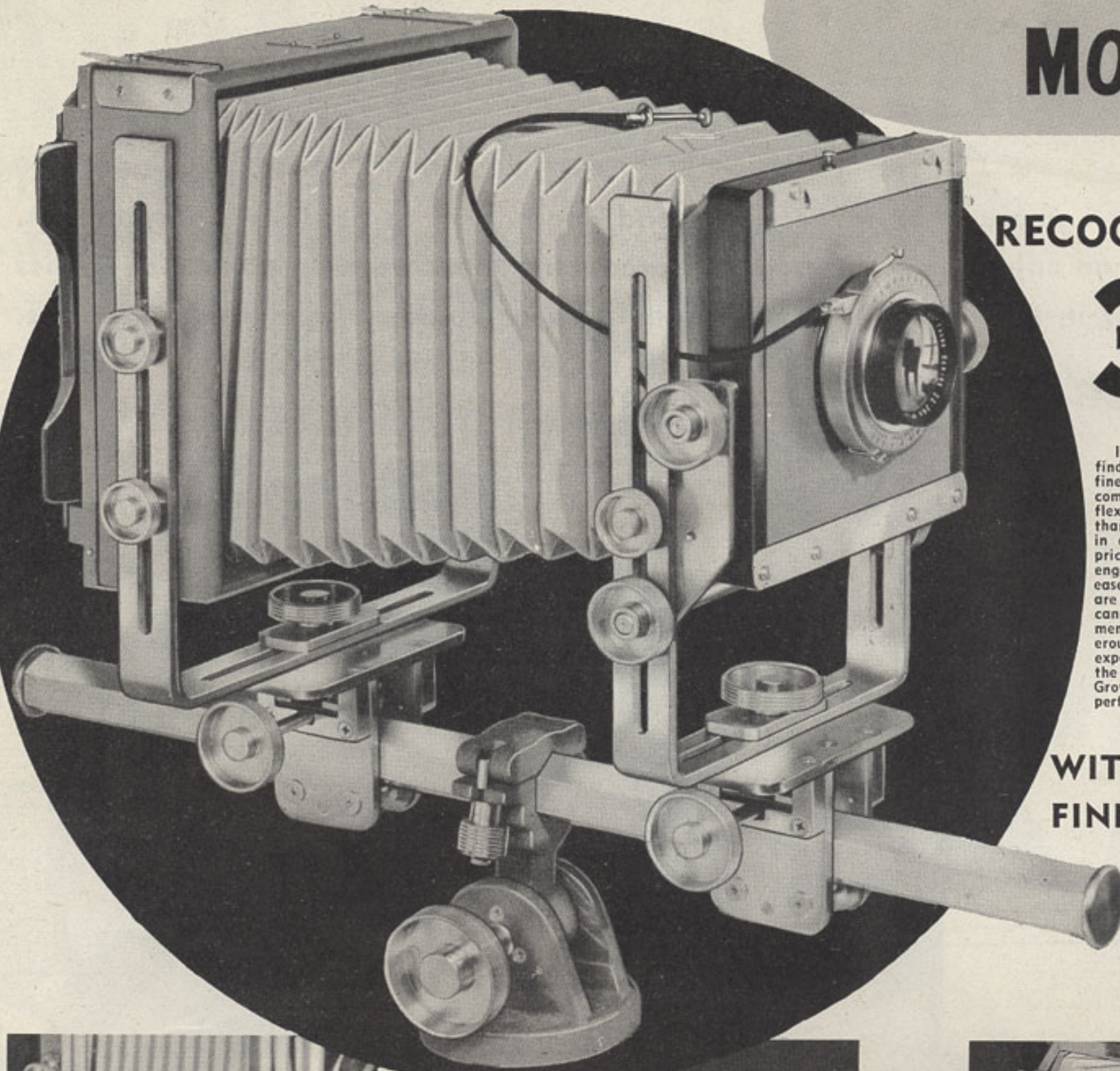
RECOGNIZED AS

3 CAMERAS
IN ONE

In this great Grover Camera you find combined in one unit all the fine features of portrait, view and commercial cameras. It has more flexibility in use—more fine features than you would ever expect to find in a camera at anywhere near this price. It embodies a host of fine engineering features that make for ease in operation. All adjustments are metal to metal. The camera cannot warp or get out of alignment. And its adjustments are generous in their proportions. No expense has been spared to put into the design and construction of the Grover every necessary feature for perfect picture making.

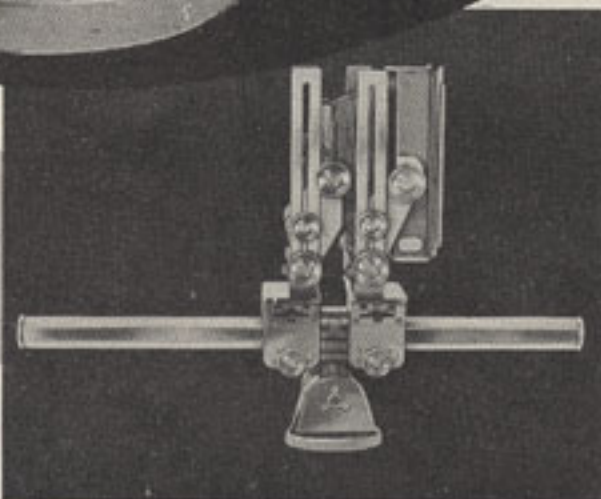
**WITH MORE and
FINER FEATURES**

The illustration at the left shows the 5x7 inch Grover. It is identical in all details of the 8x10" camera except in size. The 4x5" size used in illustrations below has a press camera type revolving back. The 5x7 and 8x10 inch Grover are fitted with the conventional spring type backs.



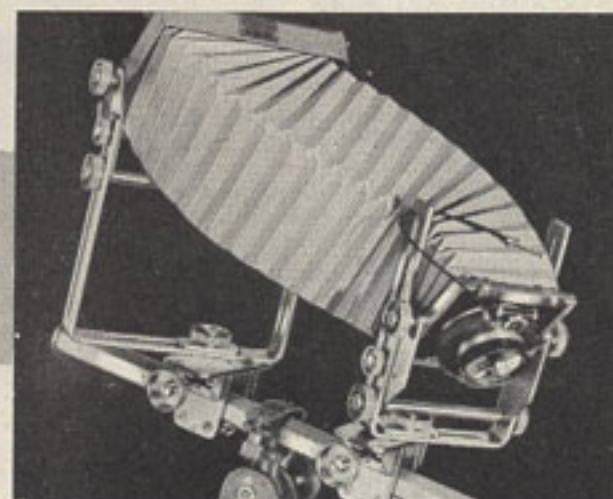
FOCUS FROM FRONT OR BACK

The focusing elements of the Grover are identical at both front and rear of the camera. The micro-friction drive for focusing is firm and smooth acting. The hexagon-shaped monorail bed bar provides ample bearing surface to maintain both front and rear camera elements in perfect alignment.



FOLDS COMPACTLY — QUICKLY

Note in the illustration above how compactly the camera folds. The location of the tripod mounting plate is also adjustable permitting the entire camera to be moved forward on the metal bed rail—a valuable feature when working with extreme wide angle lenses. The extra long bellows cover the full span of the bed with ample reserve.



ANY ADJUSTMENT YOU NEED

Here you see the extreme variation of the adjustments provided on the Grover. Unlimited swing and tilt movements far exceed the covering power of a normal lens. Each adjustment is independent of the others—they may be used singly or in combination with one another. When difficult camera subjects call for unusual camera angles, your Grover will meet the challenge.

IF YOU WANT ONE CAMERA FOR ALL YOUR WORK — THIS SHOULD BE IT!

The accumulated experience gained in over 53 years of service to the photographic profession is reflected in the design and construction of these new Grover Cameras. They meet the exacting needs of every serious worker, amateur and professional, for fine photography in every conceivable type of commercial, view, illustrative, pictorial and portrait work. All working parts and wearing surfaces are accurately machined and fitted. Precision accuracy is quickly and easily secured in every one of its many adjustments. It is of extremely rugged design—built to withstand normal abuse and to give you years of satisfactory service.

When working with a Grover Camera, the amateur or professional operator who strives to produce a better type of picture can give the widest possible range to his creative ability in producing unusual negatives. The adaptability of the Grover to every picture problem provides the photographer with a new "photographic tool" that is practically universal in its application to every type of portrait, view and commercial work. You will find the Grover an ideal instrument for photographing everything from cramped interiors to broad scale architecture—from small studio set-ups to the finest type of illustrative work.

GROVER SURPASSES THEM ALL IN FINE

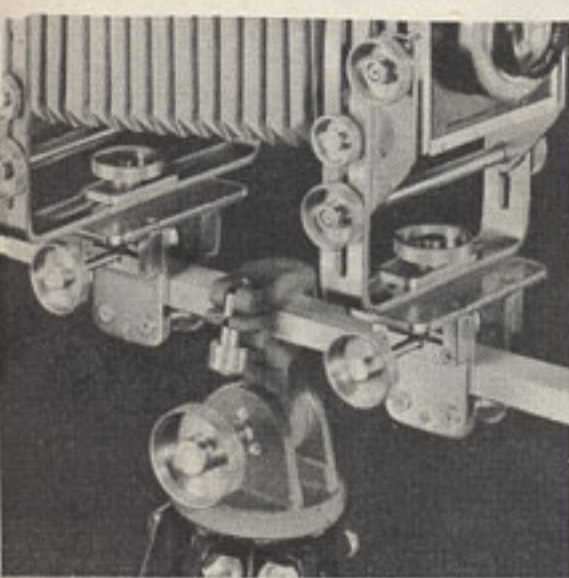
THE LAST WORD IN MODERN CAMERA DESIGN

MORE ADJUSTMENTS THAN YOU NEED

The many adjustments of the Grover Camera include rising, falling, swinging, tilting and side shift at the front; tilting, swinging, rising and shifting back. It meets every requirement for controlling linear perspective and sharpness of field. For straight-away portraiture, for difficult commercial subjects and fine pictorial work, the Grover brings you an overflowing measure of operating convenience.

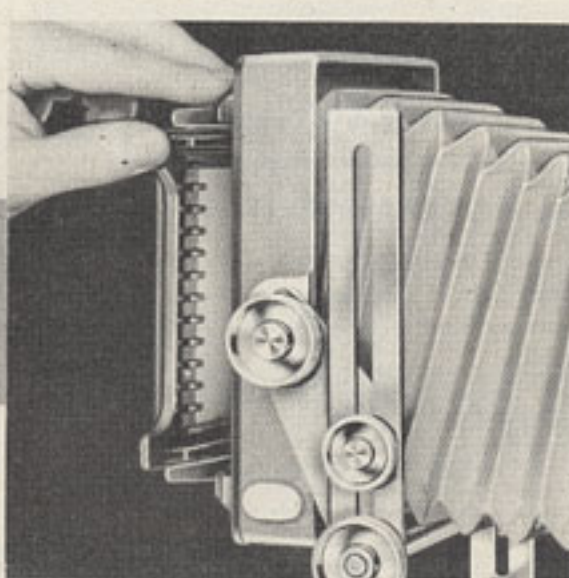
RIGID ALL-METAL MONORAIL BED

The wide slotted U-Standards supporting both the lens front and the camera back provide remarkable flexibility in adjustment. The swing, tilt, rise and fall movement provided exceed the covering power of the normal lenses. Thus, the extreme adjustment available far exceed all normal operating requirements. Both long and short focal length lenses may be used.



QUICK - ACTING ADJUSTMENTS

The tripod mounting unit on the Grover provides for tilting the camera to any desired angle taking the place of a tripod tilt-top. Large knurled control knobs represent a distinct improvement over the conventional type. Their action is velvet smooth.



REVOLVING BACK ON THE 4x5"

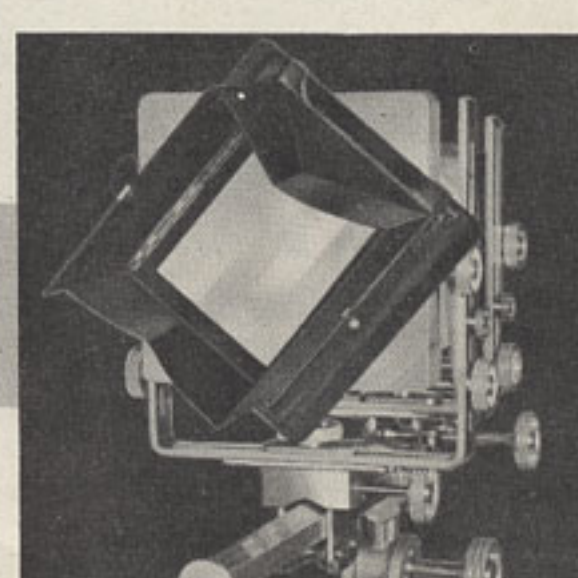
Illustration above shows 4x5 inch Grover with its all-metal revolving back and folding, 4-sided light hood. Change over from vertical to horizontal composition takes but an instant. The light hood protects the ground glass when folded.

MICRO-FRICTION FOCUS—FRONT and REAR

A specially designed micro-friction drive is employed that represents a distinct improvement over the conventional types of focusing systems—a velvet smooth action that permits extremely fine adjustment—absolutely free from play or backlash. This smooth, even tension drive is accomplished through the use of six wheels riding on four different surfaces of the hexagon-shaped monorail bed.

EXTRA LONG 'SQUARE' TYPE BELLOWS

The extra long bellows on the Grover is equal to a triple extension in a conventional type of camera. Ample material is provided in the bellows to permit full use of the camera's many adjustments—even when working with the bellows fully extended. The bellows folds down compactly for use with extreme wide angle lenses.



FULL FOCUSING SCREEN

The ground glass focusing screen on the Grover is full negative size with no cut-off corners. A unique ventilating system eliminates the need of cut corners. You can study the ground glass image to the extreme corners.

THREE POPULAR SIZES MEET EVERY NEED FOR FINE PHOTOGRAPHY IN THE HOME OR PROFESSIONAL STUDIO

4x5 INCH GROVER

Camera is fitted with a revolving all-metal back, having a folding four-sided light hood. Accommodates standard plate and film holders. Lens board measures 4x4 inches. Overall bellows extension 21 inches. Price quoted does not include lens.

\$9450

Order by Number 1701H

RECOMMENDED LENSES & ACCESSORIES

CARL MEYER WIDE ANGLE
3 1/2" (90mm) F:6.8 in. Prontor II shutter, Flash Synchro, Delayed action (Speeds B, 1 to 1/200 sec.). Mounted on 4x4 in. wood lens board with "Time" lock—stops down to F:32, Coated.....\$59.50
WOLLENSAK WIDE ANGLE LENS
3 1/2" F:6.8 in. Rapax shutter. Speeds 1 to 1/400 sec. (Coated). Covers 4x5".....78.76
ILEX PARAGON
6 1/2" F:4.5 in. Universal shutter (1 to 1/150 sec.) Lenskoted.....\$92.10
6" F:3.5 SCHNEIDER XENAR coated in Compound Shutter.....\$150.00
6" F:4.5 CARL ZEISS TESSAR coated in Compur Shutter.....\$99.50
GROVER STAND.....\$33.90
4x5" FILM HOLDER.....\$4.15
CARRYING CASE FOR 4x5" GROVER
Holds camera, holders, accessories, etc.....\$16.95
Order by Number 1704H

5x7 INCH GROVER

Camera is fitted with a reversible wood back, having a folded 4-sided light hood. Accommodates standard film and plate holders. Lensboard measures 5 1/4 x 5 1/4 inches. Overall bellows extension 21 inches. Price quoted does not include lens. Will take all Packard Shutters up to 2" opening.

\$10950

Order by Number 1702H

RECOMMENDED LENSES & ACCESSORIES

ROSS WIDE ANGLE XPRES
5" F:4 in. Barrel, Lenskoted — Mounted on board with Packard shutter.....\$99.50
WOLLENSAK RAPTOR SER. II
7 1/2" F:4.5 in. Alphax shutter (1 to 1/100) Lenskoted.....\$99.46
SLIDING CARRIAGE BACK
5x7"—Permits two exposures on 5x7".....\$34.50
SLIDING CARRIAGE BACK
5x7"—4x5"—Permits two exposures on 4x5".....\$34.50
FILM HOLDERS
5x7".....\$4.80
GROVER STAND (See page 20).....\$33.90
REDUCING BACK
5x7" to 4x5" or 3 1/4 x 4 1/4 or 2 1/4 x 3 3/4".....\$15.95
CARRYING CASE
For 5x7" Grover. Holds camera, holders, accessories, etc.....\$16.95
Order by Number 1705H

8x10 INCH GROVER

Camera is fitted with a standard type reversible wooden back, without folding light hood. Accommodates standard film and plate holders. Lensboard measures 6x6 inches. Overall bellows extension 29 inches. Price quoted does not include lens. Will take all Packard Shutters up to 2 1/4" opening.

\$13250

Order by Number 1703H

RECOMMENDED LENSES & ACCESSORIES

WOLLENSAK SER. IIIa EXTREME WIDE ANGLE
6 1/4" F:12.5 in. Rapax shutter, Coated.....\$93.62
CARL MEYER ANASTIGMAT
12" F:4.5 in. Betax shutter (1/2 to 1/50), Lenskoted.....\$189.50
GUNDLACH RADAR ANASTIGMAT
12" F:4.5 in. Betax shutter (1/2 to 1/50), Lenskoted.....\$199.50
REDUCING BACK 8x10" to 5x7" or 4x5" or 3 1/4 x 4 1/4 or 2 1/4 x 3 3/4".....\$21.50
SLIDING CARRIAGE BACK, 8x10" to 5x7" — Permits two exposures on 5x7".....\$39.50
FILM HOLDER, 8x10" - Single sheet capacity, heavy duty; pressure type.....\$3.50
GROVER STAND (See page 20).....\$33.90
CARRYING CASE - For 8x10" Grover. Holds camera, holders, accessories, etc.....\$18.75
Order by Number 1706H

WORKMANSHIP • DESIGN • CONSTRUCTION!

Here is a camera that is designed and engineered to produce fine portraits. Every feature and adjustment necessary in producing prize-winning portraits—either in the studio or in the home—will be found in these famous Rembrandt Cameras.

*Engineered
for finer
Portraits*

The fine-grained ground glass focusing screen, shielded by the four-sided light hood, shows a brilliant image. Focusing knobs on both sides of the camera permit you to bring the image into sharp focus instantly. Rise, fall and tilt, control knobs are all closely grouped at the back of the camera for operating convenience.

The Rembrandt Cameras are fitted with a focusing lock of unique design—permitting the focus to be securely locked in any desired position. This is an invaluable aid when photographing babies and the operator's time and attention are needed at the front of the camera to bring forth the desired pose.

Rembrandt Cameras are fitted with specially processed, fine-grained ground glass focusing screens to provide utmost brilliance of image. An attached four-sided folding light hood cuts off stray light eliminating the need of a special focusing cloth.

Hardwood body with solid front standard in natural mahogany finish. Overall dimensions, 11x11½x15 inches. Rack and pinion focusing with dual control knobs and focusing lock. Back adjustments include rise, fall, and tilt. Available with regular back or divided back. Large 6x6 inch removable lens board. Weight less lens, 10 lbs. Fittings for hose connection on behind-the-lens shutters are standard on all models; accepts 2¾" opening Packard shutter without fitting or tools. Has standard threaded tripod socket. Lens and shutter not included.

Rembrandt Cameras are fitted with the approved type square bellows in an attractive red finish. They permit a focusing range from 4 inches to 15 inches. This permits the use of special wide angle lenses in addition to lenses of normal or long focal length.



<p> FOR YOUR REMBRANDT CAMERA PORTRAIT LENSES—See Lens Section B&J STUDIO STAND\$33.90 REDUCING BACKS to 2¼x3¼, 3¼x4¼ or 4x5 (specify size and camera)\$15.95 PACKARD SHUTTER, 2¾" opening\$12.50 Ditto, with built-in synchronization\$18.50 Bulb and Rubber Tubing 10 feet long\$ 1.75 Order by Number 1501H </p>	
---	--



Just slip in shutter, turn four built-in screws, and installation is complete.

This very special feature you must see. A Built-in Frame for your 2¾ in. opening Packard Shutter with metal tube and space for synchronizer. We recommend that you buy the shutter right with the camera and then slip on the rubber tube. Large Lens Board, 6x6 in. which is designed for ready interchange of lenses.

DON'T SELL YOUR ABILITY SHORT WITH A POOR LENS